

3201

Dr

LIBRARY
RECEIVED
★ APR 25 1955 ★
U.S. Department of Agriculture

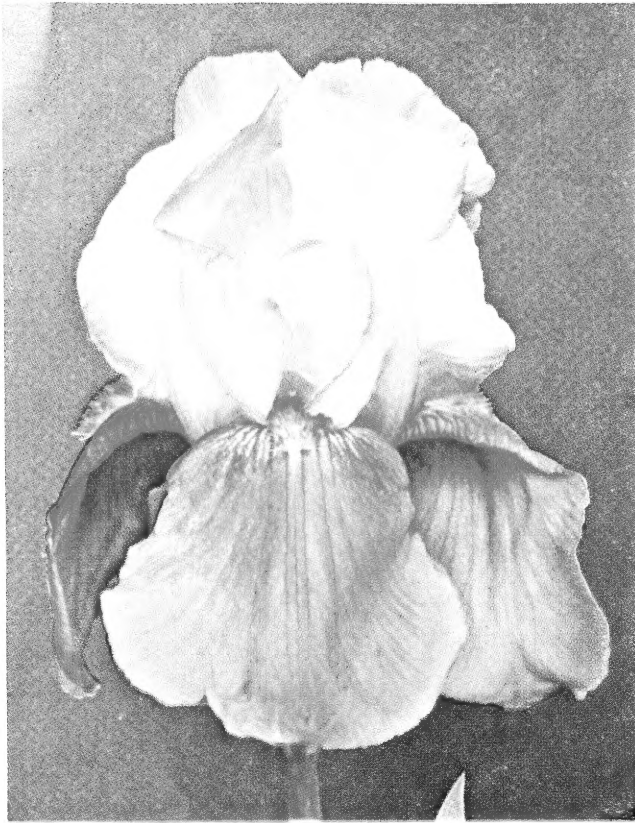


THE MAD HATTER

Lyon's IRISLAND
IRIS and HEMEROCALLIS ... 1955 CATALOG

Price 25c

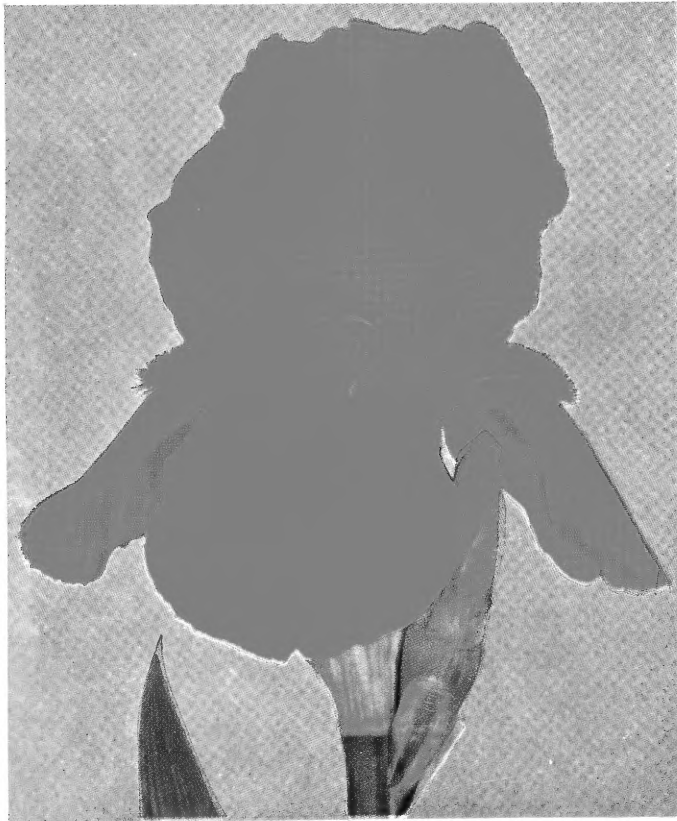
LYON IRIS GARDENS • 7041 WOODMAN AVENUE • VAN NUYS, CALIFORNIA



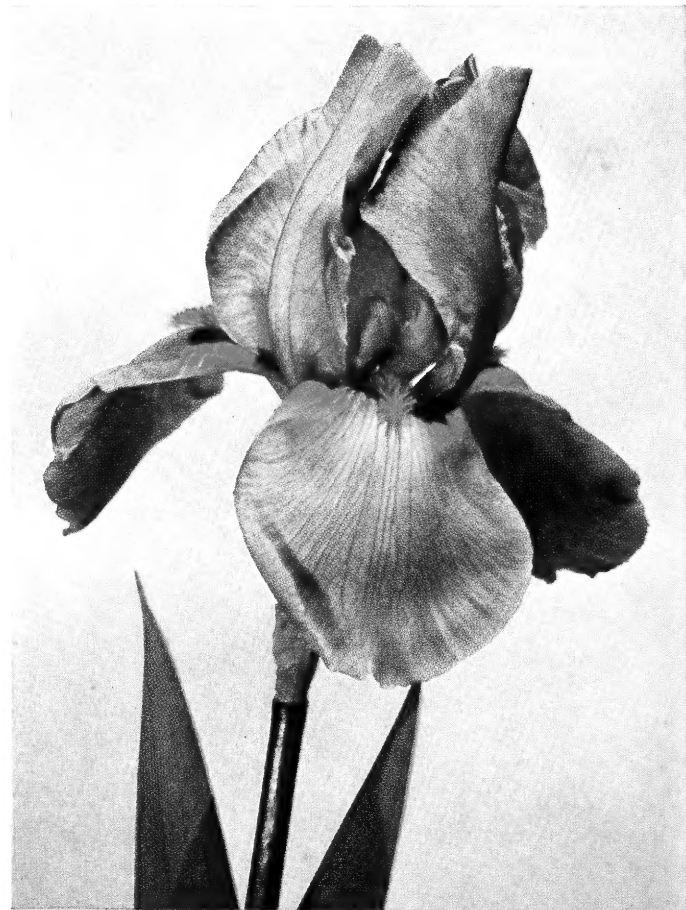
MAYTIME



THOTMES III



GOLD SOVEREIGN



DESERT TWILIGHT

LYONS IRISLAND OFFERS MANY SPECIES OF IRIS

Collections of the Brightest Stars in **BEARDED IRIS**

Here are the Lyon Iris Collections for 1955! We have selected your favorites in each price group and made what we believe to be the most interesting opportunities you'll run across anywhere. Just read through the groups at the bottom of the page and then select from them as indicated for each of the collection offers. Select just one of a kind, please!

★ Meteor Collection

A five dollar bill goes a long way here, buying a third more than when used to purchase varieties individually.

One Iris from Group C
Three Iris from Group D

4 Iris in all,
value \$7.50, for..... **\$5.00**

★ Comet Collection

Selections from three different groups, with plenty to show for your money, make this a very desirable middle-priced collection.

One Iris from Group B
Two Iris from Group C
Five Iris from Group D

8 Iris in all,
value \$18.50, for..... **\$12.50**

★ Galaxy Collection

Your're sure to find varieties in each of the groups listed below that you will be happy to add to your galaxy of blooms next spring.

One Iris from Group A
Two Iris from Group B
Three Iris from Group C
Two Iris from Group D

8 Iris in all,
value \$30.00, for..... **\$19.50**

★ Universe Collection

Here's your chance to get a good assortment of the higher priced varieties at a price you can afford to pay. Lots of value here.

Two Iris from Group A
Three Iris from Group B
Four Iris from Group C
One Iris from Group D

10 Iris in all,
value \$44.50, for..... **\$29.50**

Make your selections from these bright constellations!

GROUP A (\$8.00 values)

APRICOT GLORY—Smooth, clear, rich apricot.
AZURE LAKE—Large ruffled and flared blue beauty.
CAROLINE JANE—White and blue plicata.
HAPPY BIRTHDAY—Hall's famous light pink. Ruffled.
HIGH SEAS—A ruffled, silky, blue-white.
PURISSAMOHR—White oncobred.
REAL GOLD—Antique gold and buff oncobred.

GROUP B (\$5.00 values)

ALI BABA—Bright garnet-red.
APRICOT SUPREME—Apricot-salmon; geranium-red beard.
AUNT AMORET—Elegantly ruffled white, brushed violet.
BURGUNDY SPLASH—Flashy burgundy and yellow plicata.
DANCING DEB—Light heliotrope; nicely ruffled.
EMPRESS EUGENIE—Empire yellow self; garnet brown touch on falls.
FANCY FEATHER—Yellow and red plicata.
FROSTY—Frosty white etched with violet.
GOLDEN SHADOWS—Fascinating white with gold.
MASTER NEIL—Cream marked with cinnamon-brown.
MYSTIC MELODY—Butter yellow falls, soft cream standards.
NIGHT MOTH—Pale wisteria and violet oncobred.
PINK SENSATION—Flamingo pink with laced edges.
SAVAGE—Bronze-red suffused blazing magenta.
SUMMIT—Snow white standards, golden yellow falls.
TRANQUILITY—Perfectly white throughout.

GROUP C (\$3.00 values)

CHAR-MAIZE—Lyon's own chartreuse yellow.
ENVOY—Deep reddish purple with burnt orange beard.
GRACIOUS LADY—Smooth powder blue—no markings.
HEIGHO—Bradley violet, large, full oncobred.
HIGH TOR—Bright chicory blue. Very fragrant.
HI-TIME—Golden apricot with tangerine beard.
NEW HOPE—Crisp blue and white plicata. Ruffled.
ROSABELLA—Deep rose-red with copper flush.
RUFFLED BOUQUET—Cream bi-tone with ruffled petals.
SWEET MARIE—Appealing orchid with tangerine beard.

GROUP D (\$1.50 values)

AMADINE—Beautifully ruffled, cool lemon-yellow.
ARCADIA BUTTERCUP—Extremely bright, deep yellow.
CALIFORNIA ROSE—Pinkish old rose. Large.
CARABELLA—Non-fading, tall, salmon-pink.
CUSTARD—Soft yellow sprayed cinnamon brown.
EL PASO—Rich, metallic, golden brown.
GAY BORDER—White, bordered bright maroon-rose.
HELEN MCGREGOR—Famous Dykes Medal spectrum blue.
LOCKWOOD—Bright brown blend boasting a blaze.
NEW SNOW—As clean and fresh white as its name.
RICH RAIMENT—Rich, brown-red and white plicata.
RODEO—Green-gold background patterned in buckskin brown.
SONG OF SONGS—Chantilly edged creamy yellow.
TOBACCO ROAD—Beautifully flaring golden brown self.
TWILIGHT SKY—Soft pink with red-tinged beard.
WHITE SMOKE—Ruffled blue-white with blue smoke cast.

**TREASURE HUNT—Hidden in each of the groups of iris listed above is one variety that is out of place—a much more valuable one than the rest of the group. Find this hidden treasure and you can swell the value of your collection.*

DON'T BE CONTENT WITH BEARDED IRIS ALONE!

1955 INTRODUCTIONS

BEARDED IRIS

HAPPY MEETING (David Lyon 1955) \$25.00

We proudly present this year a highly ruffled plicata of exceptionally good, heavy substance and attractive color. The ruffling is so dense that it takes two days for the flower to open completely, and this same ruffling seems to be the stiffening factor which makes the individual flowers last four days after becoming fully open. The falls are white-white, with a ¼ inch pattern, almost solid around the edges, of deep violet-purple. The beard is blue tipped. The standards are old ivory so heavily sprayed with a slightly lighter shade of violet-purple that only a small area near the midrib escapes to show the pure ground color. You may be sure that the branching, spacing, size and form (flaring falls) are all of top quality. (Lovellace x New Hope.) Highly Commended, A.I.S. 1953.

LOUISIANA IRIS

PINK CAPRICE (Sidney DuBose 1955) \$5.00

This exceptional iris of embryo culture has grown into a winsome beauty with flaring pastel pink blossoms accented by a soft golden signal. For all its wistful appeal, the medium-sized flowers have good substance and are perched on tall, graceful yet sturdy stems. Grow is vigorous and increase plentiful. Early. 36". (Opal Dusk x Kraemer Yellow.)

SPURIA IRIS

BLACK POINT (Nies 1955) \$15.00

This spuria is a real advance in the dark browns, reminding one of a bar of rich chocolate candy. It is the darkest of the spurias yet introduced in this color class. The substance is unusually firm and the texture smooth, with just enough yellow glow at the haft to brighten the flower into an eye-catcher clear across the garden. The plant is sturdy of growth and a profuse bloomer. This iris is one of the best of the last selections made by the late Eric E. Nies. 48".

PACIFIC COAST HYBRIDS

PRIDE OF CALIFORNIA

(Mr. and Mrs. R. Luhrsen 1955) \$4.00

Probably a Douglasiana-Innominata cross, as its growth is between them in height and width of foliage, inheriting the huskiness of growth from the Douglasiana and the daintiness of flower from both. The color is oxblood red with a center of deep saffron-yellow. Falls slightly darker than the little standards because of the veining on the entire petal in deepest oxblood red. Broad and flaring, with upright standards, these garden favorites are carried on 8" stalks. Stock limited.

SPRING FLIRT

(Mr. and Mrs. R. Luhrsen 1955) \$3.00

One of the little adorable Innominata hybrids we all loved because of its gaily flirtatious manner. It displays blendings of lavenders and white, with the edges of the falls laced. The foliage is very narrow, like that of grass, and the blooms are carried on 6" stalks. Ideal for rockery, small flower beds or even adaptable as a pot plant.

PACIFIC STARTLER (David Lyon 1955) \$2.00

This hybrid shows more Douglasiana traits than Innominata, with medium-sized flowers on husky plants with 10" stalks. Intense Chinese yellow standards, with falls even deeper yellow. The falls carry a deep Indian yellow signal stripe surrounded by etchings of oxblood red.

PACIFIC GLEAM

(Mr. and Mrs. R. Luhrsen 1955) \$3.00

This is the first yellow Douglasiana, and its 5-way branching is most exceptional. Many lovely, large, flaring amber yellow flowers to each stalk. The falls are slightly deeper in tone, with a Chinese yellow flush in the centers. A fast increaser and good grower. 14".

PACIFIC ROSE

(Mr. and Mrs. R. Luhrsen 1955) \$3.00

The nearest to this color in the color chart is a light brick-red, with the falls heavily flushed ruby-red around the signal center, which is of deep buttercup-yellow. The garden effect is a lovely old rose. This little fellow (probably Innominata-Douglasiana) sets itself apart from the others because of its form. The fall petals are quite rounded, fully an inch across and flaring, with the petals overlapping each other. Plant in partial shade. 8".

Illustrious Bearded Iris

AL BORAK (DeForest 1952) \$9.00

A very large, lively, brown and copper russet flower with a green-gold cast. It boasts wide, spreading falls and extremely wide hafts. Heavy substance. Mid-season. ((Her Grace x Prairie Sunset) x (Copper River)) Honorable Mention 1953.

ALI BABA (David W. Lyon 1952) \$7.50

A brother to The Mad Hatter, whose deep maroon coloring contrasts with the bright red of the Ali Baba. Its standards are spectrum taupe, flushed garnet-brown with broad flaring deep garnet-brown falls that darken toward the edges, and are of the heaviest velvety texture that does not burn or wilt in the sun. Its bright red richness stole the show here at Irisland, so we named it Ali Baba. This cross has a most pleasing fragrance. It blooms from mid-season to late, on well branched 44" stalks. (Ranger x Cordovan) Honorable Mention 1954.

ALICIA (Rowlins 1949) \$2.00

A large clear cool silvery blue of smooth iridescent quality. A Great Lakes and Glorioso cross inheriting their good qualities. 36". Mid-late. Honorable Mention, A.I.S. 1951.

ALLINE ROGERS (Kleinsorge 1950) \$2.50

This creation is an ashes of roses with a blending of gold into its coloring, which is accented at the hafts and the base of the standards. The style arms and beard also carry this gold flush. The broad petals of the flowers are ruffled around the outer edges. 34". (Cascade Splendor x Daybreak) Honorable Mention, A.I.S. 1951.

AMANDINE (G. Douglas 1946) \$1.50

This is a cool lemon-cream self, etched with the delicacy and clearness of Haviland china, yet of that wonderful substance which withstands adverse weather conditions so well. Blossoms are beautifully ruffled with broad, rounded full petals of perfect form on well branched stalks. Award of Merit 1948. Late. 36".

ANATOLIA (Craig 1949) \$3.00

An oncobred patterned light red-violet to lavender in an onco manner, with a slight signal patch at the tip of the beard. It is a vigorous grower. Midseason. ((Tiffany x Los Angeles) x Capitola)

ANTHEA (Corey 1953) \$10.00

Ruffled semi-flaring salmon-pink of medium height. (Pink Salmon x Pink Formal) Highly Commended 1951.

APRICOT GLORY (T. Muhlestein 1951) **\$8.00**

A smooth clear, rich apricot deepening at the heart of the flower. The beard is the same. The broad flaring falls are of heavy substance. 36". Blooms midseason to late. (No. 46-113 x Gay Orchid) Highly Commended 1949, Honorable Mention 1951.

APRICOT SUPREME (Tompkins 1951) **\$5.00**

Apricot salmon with full geranium-red beard. The rich flowers are large, with broad petals of exceptional substance and lovely smooth finish ((Spring Maid x Far West) x Flora Zenor x Loomis' SQ73) x (Hall's 4205 x Pink Salmon)) Honorable Mention 1951. Midseason. 40".

ARABI PASHA (G. Anley 1951) **\$10.00**

A tailored flower of deep cornflower blue with a blue beard. A graceful dip characterizes the falls. Enthusiastically received in Great Britain where it was awarded the English Dykes Medal 1953. ((Mine-rette: Blue Ensign x Windermere) x (Blue Ensign)) Midseason. 36".

ARCADIA BUTTERCUP (Milliken 1947) **\$1.50**

A clear yellow of very deep tones. Its smooth heavy texture, semi-flaring falls and good substance, make it an excellent plant for the front of your flower bed. 34". Early bloomer.

ARGUS PHEASANT (DeForest 1948) **\$2.50**

Here is a gorgeous golden argus-brown with the same colored beard. Large flowers of smooth texture, pleasing form, and good branching. 38". Late midseason to late. (Casa Morena x Tobacco Road) Award of Merit 1950. Dykes Medal 1952.

AUNT AMORET (Craig 1950) **\$5.00**

White and bright violet plicata, with ruffled petals lightly brushed violet to create a dainty appearance. (Advance Guard x Mitchell No. 0-50) Certificate of Commendation 1947.

AZURE LAKE (Muhlestein 1952) **\$8.00**

This is a smoothly finished, large ruffled flower with a horizontal flare to the fall petals. Extreme ruffling in a blue iris is a departure from the ordinary. (Azure Skies x Mirror Lake) Highly Commended 1951. Honorable Mention 1954. Early midseason. 36".

BALLERINA (Hall 1951) **\$5.00**

This creation is a very large, wide petaled and ruffled flamingo pink self in medium to light tones, with a deep orange beard. Heavy substance; ideally formed, and excellently branched on 3 ft. stalks. (Cherie x Floradora) Award of Merit 1953.

BALLET DANCER (Kleinsorge 1949) **\$1.50**

This magnificent classically formed, crisp flower is a delightful and distinctive apricot-tan self. Large full-closed standards and broad nearly horizontal falls give emphasis to this beautifully branched tall flower of exceptionally heavy substance. 36". (Chamois x Cascade Splendor) Honorable Mention 1949. Award of Merit 1952.

BANNER BRIGHT (Crosby 1954) **\$15.00**

A sure-enough new color—orange-yellow buff, if you can picture it from these words—making a self of real novelty. It's big, both in size of flower and in breadth of petal. Vigorous and fast growing, with 36 in. height. ((Mellowglow x Sunset Serenade) x (Cascade splendor)) Highly Commended 1953; Honorable Mention 1954.

BAY STATE (Corey 1949) **\$1.00**

A light blue of note, with a delightful fragrance, glistening and sparkling in the sunlight. The flowers are large and of good firm substance, stalks tall with five-way branching. (Pale Moonlight x Great Lakes) Honorable Mention 1949. 38". Mid-late season.

BIG TIME (Lapham 1951) **\$9.00**

A charming and lustrous rose-red. The standards are bronzy red slightly flushed purple. The falls are rosy red, lighter at the edges, overlaid with a blackish luster. The beard is deep reddish yellow. Large flowers well placed on excellently branched stalks. 39". Mid-season. ((Red Waves x P. Cook's No. 2044) x (Redward x Copper Rose))

BUG UTE (Wallace 1954) **\$25.00**

A large, well-formed, deep red with wide flaring falls and closed standards. Well-branched and a good grower. 36". Midseason. ((Grand Canyon) x (Lancaster x Three Oaks))

DON'T BE CONTENT WITH BEARDED IRIS ALONE!

IRIS TERMINOLOGY

AMOENA: White standards with colored falls.
BICOLOR: Standards light colored, falls a different, darker color.
BLEND: Combination of two or more colors.
FALLS: The three lower petals of the flower.
FANCY: A riotous mixture of several colors.
NEGLECTA: Light blue standards, darker falls.
PLICATA: Stippled, dotted or stitched margin color on light ground.
SELF: An iris of one, solid color.
SIGNAL: A patch of contrasting color at the tip of the beard.
STANDARDS: The three upper petals of the flower.
STYLE ARMS: The small, stiff segments just above the beard.
SUBSTANCE: The thickness of the petals.
TEXTURE: The surface character of the petals—sheen, etc.
VARIEGATA: Yellow standards with deeper falls of brown, purple or red.

BIRD SONG (Corey 1952) **\$3.00**

A bright and floriferous plicata. The standards are almost self-colored red-violet. The falls are pure white, widely flaring, with a narrow edging of red-violet. Flowers are beautifully poised on nicely branched stalks. (Amity x Sister seedling)

BLACK FOREST (Schreiner 1945) **\$1.00**

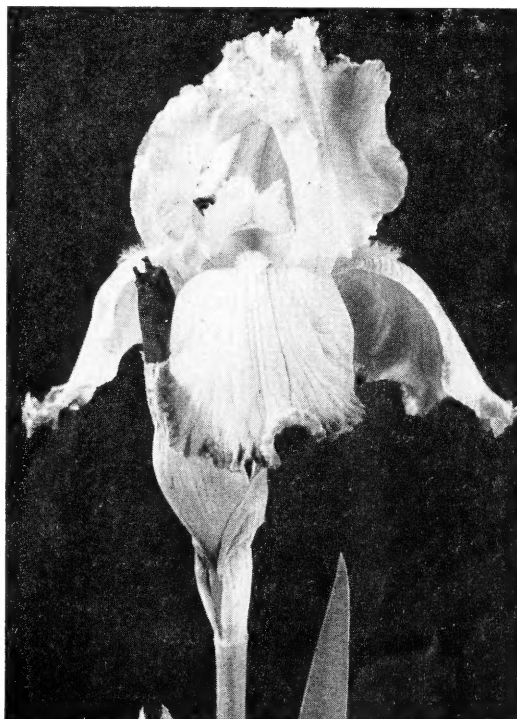
Rich, silky ebony-blue-black with a deep blue beard the same as the flower. Even the heart of the flower is as dark as deep night. The nicely formed fragrant blooms are of medium size on medium height stalks. Award of Merit 1948. 33".

BLACK HILLS (Fay 1951) **\$7.50**

A deep blue-violet with an almost ebony-black effect, including a black beard. Unlike most of the "blacks" this variety is tall and well proportioned, with excellent substance and good branching. We recommend this 38", darkest blue flower. ((No. 47-21: Black Valcr x Gulf Stream) x (Black Forest)) Award of Merit 1954.

BLUE BLAZES (Welch 1950) **\$4.00**

Lovely, tall, clean, smooth, light to medium blue with a rich orange-yellow beard. Fine size, quality, form and substance. Midseason. ((B50: Gudrun x Easter Morn) x (Great Lakes)) Highly Commended 1949. Honorable Mention 1951.



CHANTILLY—The Prototype of Chantilly-edged Blooms

- BLUE RIM** (Larsen 1948) **\$2.00**
This is one of the outstanding plicatas. Large blooms with wide rounded petals, smooth substance. Standards are heavily sprayed with clear medium blue, fall petals etched around the edges, leaving center of falls almost white. Midseason. 36". ((Purissima x Alameda) x (Aldura))
- BLUE SAPPHIRE** (Schreiner 1953) **\$7.50**
A blue iris of large size and exquisite purity which takes its place among the top rated blues. It is a good bloomer and has poise. Good, heavy substance and beautiful ruffling. Early. 40". (Snow Flurry x Chivalry) Honorable Mention 1954.
- BLUE VALLEY** (K. Smith 1947) **\$1.00**
The large ruffled blooms with flaring falls are medium blue which continues well into the heart of the flower. Smooth texture, and metallic sheen sparkles throughout the entire flower. Mid-season. 36". (Lake George x Great Lakes) Award of Merit 1949.
- BLUMOHR** (Marx 1949) **\$5.00**
Pure lavender blue, near plumbago, with no veining whatever to be seen on the flower. Long-lasting blooms of Wm. Mohr form. Exceptional texture and substance. A single bloom lasts in the garden for three or four days. The branching is fair, height 36". Mid-season. (William Mohr x Orloff) Award of Merit 1952.
- BOLD CONTRAST** (Linse 1954) **\$15.00**
Standards are Inca Gold, with minute rose veining, giving a faint rosy flush. The broad, semi-flaring falls are red—between raspberry and mauve rose, with a narrow edging of gold. This is a really fine variegata, with smooth texture. 38". Midseason to late. (Extravaganza x Rajah Brooke)
- BRIGHT HOUR** (Douglas 1952) **\$9.00**
An improvement on Wabash color. Silver-white standards, attractively ruffled, white styles which shade to cream at the base. The beard is clear yellow and the falls are velvety purple with clear ruffled white border extending part way around the edges. ((Cook's No. 129-42 x (Extravaganza x Wabash)) Honorable Mention 1953. 36".
- BURGUNDY SPLASH** (Craig 1949) **\$5.00**
Large well-formed broad-petaled flowers of exceptionally heavy substance. Standards are a subdued burgundy, the falls a creamy yellow, heavily stippled a richer and more intense burgundy around the outer edges. This is one of Tom's finest plicatas. 36". ((Tiffany x Mme. L. Aureau) x (Tiffany x Los Angeles))
- BURMESE RUBY** (Muhlestein 1949) **\$1.50**
A dark red self with an orange beard and a smooth, enamel-like finish. (Red Valor x Red Gleam)
- BUTTERFLY WINGS** (White 1946) **\$1.50**
Iris lovers, more and more, are showing their regard for the gay and delightful Butterfly Wings. Porcelain blue with fall petals heavily veined, creating the illusion of the iridescent wings of a butterfly. Honorable Mention 1947. Early mid-season. 36".
- CAHOKIA** (Faught 1948) **\$3.00**
A fine addition to the light blue class. There is a tantalizing tint of turquoise in Cahokia that intrigues a lover of blue iris. Honorable Mention 1949. Award of Merit 1951. Mid-late. 40".
- CAIRO** (Kleinsorge 1952) **\$6.00**
A light tan, with tawny yellow overtones and a buff suffusion near the haft and some fine brown netting on the shoulders of the falls. A bronze-yellow beard. Large, tall, with horizontal flaring falls.
- CAMPFIRE GLOW** (Whiting 1947) **\$2.00**
A pure self of glowing ruby-red, heavily overlaid with bright copper, giving it a metallic finish. There are no haft markings and even the beard is red, glinted with copper. (Amaranth x Three Oaks) Honorable Mention 1947. Mid-season to late. 36".
- CAPTAIN FROM CASTILE** (DeForest 1951) **\$3.50**
A bright large flowered plicata. The ground color is a rich yellow with dark brown stitchings. The standards and styles are flushed red-brown. The beard is brownish orange. 36". (Vision of Merza x Firecracker) Honorable Mention 1952.
- CARABELLA** (DeForest 1949) **\$1.50**
This lovely tall clear self of medium toned salmon-pink, with a self colored beard, has beautiful branching and produces lots of gorgeous, non-fading blooms. Mid-season. 40". (Melitta x Midwest Gem) Honorable Mention 1949.
- CARDINAL'S ROBE** (Lyll 1950) **\$2.50**
A brilliant deep magenta purple or reddish wine, with no venation. Excellent form and substance. The petals are broad and slightly ruffled. 40". Mid-season. (Indian Hills x Sable)
- CAROLINE JANE** (DeForest 1951) **\$9.00**
A large flower of glistening white, this plicata with blue-violet stitching is distinctive and a profuse bloomer. The branch placement attracts favorable comment. Proportions are nicely balanced. ((No. P42X: Her Grace x Tiffany) x (New Hope)) Honorable Mention 1951. Mid-season. 36".
- CASCADE SPLENDOR** (Kleinsorge 1945) **\$1.50**
An outstanding blend of pink, tan and apricot. Large blooms, ruffled in both standards and falls, are of good substance. Long blooming season. 36".
- CASCADIAN** (Linse 1952) **\$7.50**
A ruffled, cool, crisp beauty which takes its place as one of the very best whites. The buds have a blue tinge, but the flower opens as a clear white with a faint greenish cast through the center of the falls. The beard is white. 36". Early mid-season. (Snow Flurry x Cloud Castle)
- CATHEDRAL BELLS** (Wallace 1953) **\$10.00**
Reminiscent of a melodious carillon is this new pink. It leans toward the light begonia-pink in color and is notable for heavy substance and slight ruffling. ((No. 48-9: Hagen blend SdIng. x Overtrure) x (No. 48-35: Golden Spangle x Muhlestein pink No. 46-22)) Honorable Mention 1953. 42".
- CENTENNIAL QUEEN** (Wallace 1954) **\$15.00**
A large, ruffled flower in light blendings of rose. Rich and colorful; well-branched. 38". Mid-season. (Lancaster x Three Oaks)
- CERULEAN** (T. Craig 1950) **\$6.00**
This iris is a pogo-cyclus hybrid. Large broad rounded Mohr type flowers. In color it is a light greyed cerulean blue. A handsome iris. 40". (Purissima x Capitola)
- CHAMOIS** (Kleinsorge 1944) **\$1.50**
The soft, satiny finish and tan shade of chamois-skin itself enlivened by a bronze-tipped, yellow beard. Honorable Mention 1948.
- CHANTILLY** (Hall 1945) **\$1.00**
Ruffled orchid-pink flowers with a flush of gold at the haft. The edges of both standards and falls are very heavily frilled, giving the appearance of being edged with lace. Good substance. 36".
- CHAR-MAIZE** (D. Lyon 1949) **\$5.00**
A large flowered iris of exceptional merit. Extra fine in proportion and heavy of substance with falls and standards delicately ruffled. For richness of color this flower is hard to surpass, for the deep yellow shows rich tones of chartreuse which blend and deepen in the ruffling to present a flower of definite quality. The heavy substance withstands degrees of heat and wind such as to wilt the average iris. Char-Maize is vigorous, presenting well spaced flowers on tall branching stems. 44". Mid-season. (Snow Flurry x Aztec Copper) Highly Commended 1948. Honorable Mention 1949. Award of Merit 1952. Runner-up for Dykes Medal 1954.
- CHERIE** (D. Hall 1947) **\$3.50**
A flamingo pink. Its delicate shade of real pink contrasted with a deep tangerine beard is most entrancing. The ruffled blooms are of good size, form and substance. A vigorous grower. Mid-season. 34". Award of Merit 1949. Dykes Medal 1951.
- CHINOOK PASS** (Norton 1950) **\$1.50**
Silvery blue, darkening toward the edges of the falls. The beard is light yellow at the base, white at the tip. Large flowers are well spaced on graceful stalks. (Sylvia Murray x Gloriele) Honorable Mention 1951. 38".

CHIQUITA (Knowlton 1951) **\$5.00**

Lovely ruffling lends charm and enchantment to this near amoena. The very pale blue-lavender standards are closed and firmly held; the flaring deep velvety blue-purple falls are distinctly penciled at the edges with the same color as the standards. 36". Late. Honorable Mention 1951.

CHIVALRY (J. Wills 1944) **\$1.00**

Dykes Medal winner for 1947. Its blooms are medium blue with ruffled edges, having domed standards that are large and full. The gracefully flaring falls are broad at the haft, and are of excellent texture. Blue tipped orange beard. Mid-season. 36".

CINNAMON TOAST (Sass 1953) **\$17.50**

Aptly named is this plicata, which stems from Ruth Pollock hybridizing. Large broad petals, heavy substance and satin finish are evident. Color is ivory, with wide borders heavily sanded with rich red-brown. Well branched stalks. Mid-late. 36". Honorable Mention 1953.

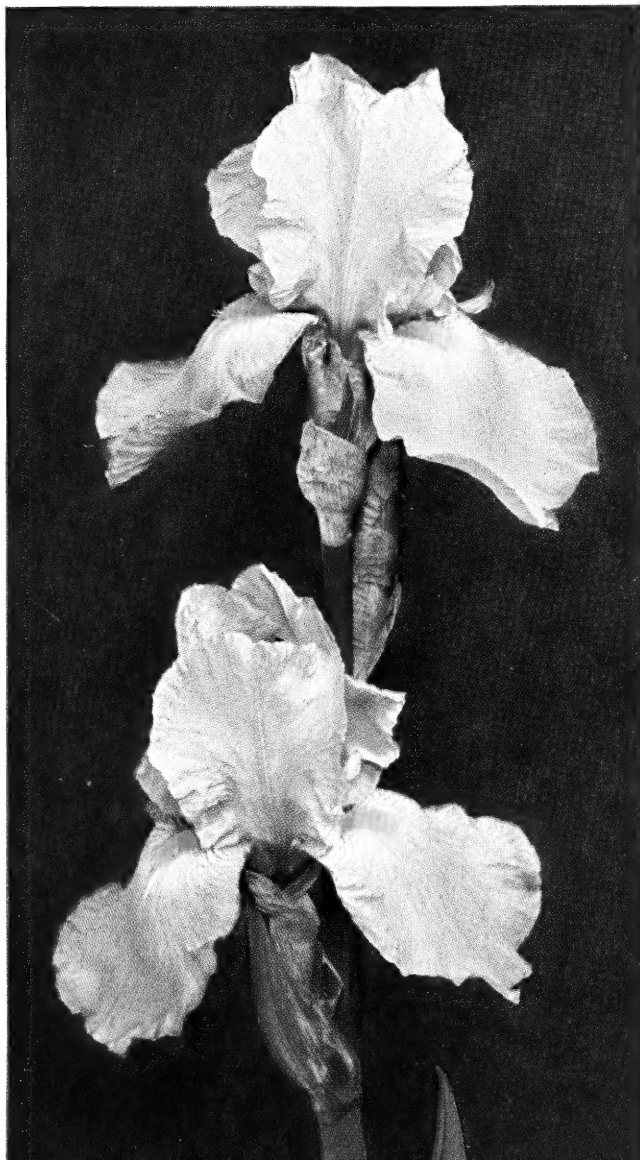
CLARA B (Muhlestein 1952) **\$7.50**

Possesses the familiar Chantilly edge. White with lemon-gold border, heavily laced standards and falls. For those engaged in or planning hybridizing this flower should have special appeal because of its heavy lacing as well as its pink ancestry. (Chantilly x No. 46-2F; Hall's No. 42-10 x SQ 72)

CLEAR SAILING (DeForest 1950) **\$3.50**

This iris is soft and refined, its lemon-ice and deeper yellow of exceptional clearness are combined in a lovely manner. (Tiffany x Coritica) Honorable Mention 1950.

JANE PHILLIPS



CLOUD CAP (DeForest 1950) **\$6.00**

Large blossom-pink flowers whose fall petals are broad and have a drooping flare form. For contrast the beard is a bright tangerine red. Smooth, with pleasing texture and substance. Mid-season. 40". Honorable Mention 1951. Award of Merit 1953.

COLORCADE (Tompkins 1952) **\$5.00**

Nicely formed and smoothly tailored flowers of blended tones of copper-orange and rose-red with a blue flush at the beard and a rich chocolate-red touch at the hafts. Good, heavy substance. Late mid-season. 37". (Veishea x Bronze Copper)

COLOR CARNIVAL (DeForest 1949) **\$2.50**

This well-named flower is a deeper pink than Spindrift, and has a startling color contrast of bright purplish tones throughout the top portion of the falls, surrounding a bright tangerine beard. Mid-season. Honorable Mention 1950. 36".

COLOR GLO (Schreiner 1953) **\$7.50**

Originator's description: Dramatic in concept, brilliant in rendition, this stunning color gem in rose-pink and gold needs no word picture to enhance its gripping beauty. Truly a top-most blend. Mid-season. 40".

COLOR HARMONY (Mitchell-Lafrenz 1954) **\$10.00**

This is an odd blend, with standards of golden buff flushed bluish violet while the falls are bluish lavender edged golden buff. Flowers are semi-horizontally held and of good substance. 40". Mid-season. (Sultan's Robe x Mitchell seedling)

COLUMBIA (Tompkins 1952) **\$12.00**

A medium sized flower, beautifully tailored, with flaring form. The broad, heavy petals gleam with a rich medium blue, very close to true blue. Stalks are well branched with good flower placement. From mid-season to late. 36". ((Blue Shimmer x Lovely Day) x And Thou x (Annabel x Narain)) Honorable Mention 1952.

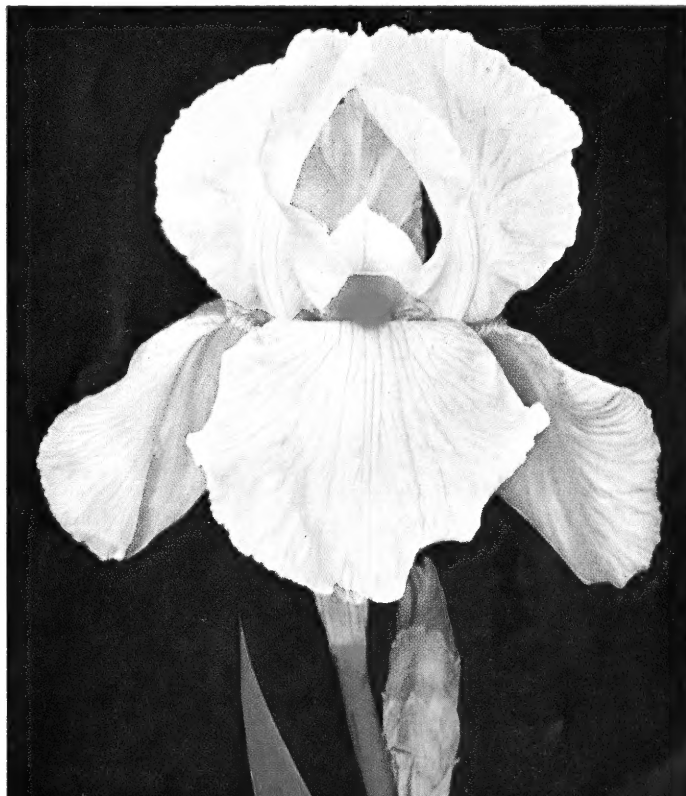
CONCORD VELVET (Crosby 1952) **\$4.00**

The color, as its name implies, is a beautiful rich Concord grape purple. Large in size, smooth in finish, with well spaced blooms on tall stalks of good branching. Winter hardy. Mid-season. 38". (Wm. A. Setchell x Sable) Honorable Mention 1952.

CONQUEST (Marx 1952) **\$7.50**

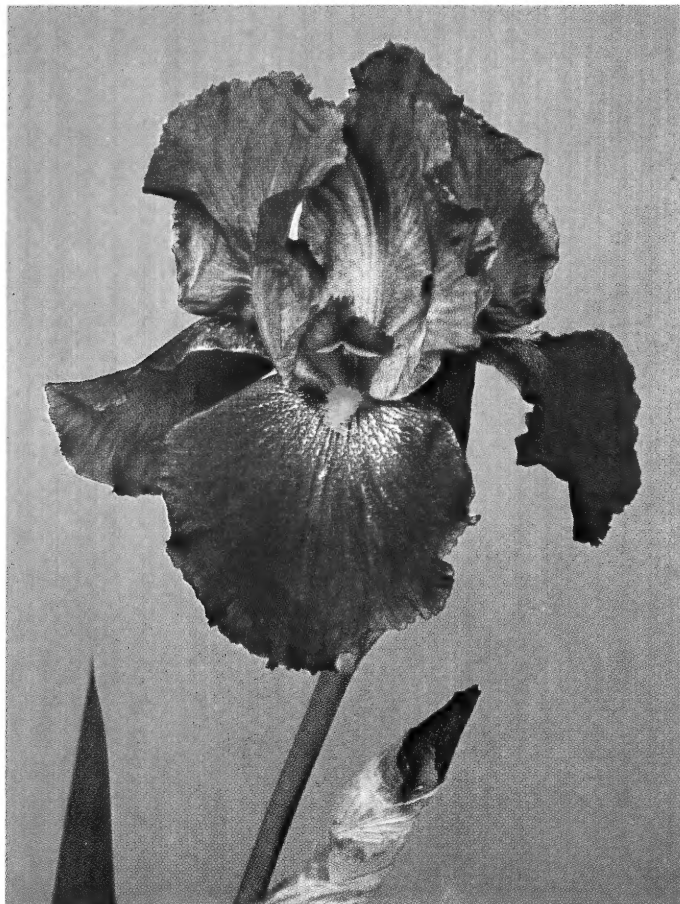
An oncobred, referred to as the "Blue Lady Mohr." Giant in size, the standards are of pale wisteria blue, the falls a slightly lighter hue, faintly suffused chartreuse. A prominent bronze beard and small purple signal patch on the broad falls give it distinction. Early 30". (Snoqualmie x Capitola)

FANTASY





MYSTIC MELODY



MAJORETTE

CONSOLATION (Tompkins 1950) **\$3.00**

A gigantic flower of light medium or powder blue; well tailored, semi-flaring form and heavy substance. It has a fascinating glistening finish. Mid-season. 38". (Blue Shimmer x Great Lakes)

CONSTANT COMMENT (Hall 1954) **\$12.00**

Delicate and charming pinkish apricot with a heavy, brilliant, red-orange beard. Flowers are large with heavily ruffled, finely notched edges. A good grower. 36".

CONVENTION QUEEN (Muhlestein 1954) **\$25.00**

Large, wide-petaled, peach-pink flowers with a beard which blends into the coloring of the flower instead of competing with a strong tangerine. Petals are heavily laced and of good substance. Stalks are well-branched. A very fine addition to this color class. Mid-season to late. 38". (Salmon Shell x Pink Fulfillment)

COPPER MEDALLION (Schreiner 1951) **\$4.00**

This metallic gem rivals brightly burnished copper in splendor. The Bryce Canyon strain is visible, although the metallic quality is stressed by having less red than its popular forbear. Blooms are symmetrically formed and of generous size. 38". (Bryce Canyon x Sunset Serenade) Honorable Mention 1953.

CORONATION GOLD (H. F. Hall 1952) **\$8.50**

This iris is a self of non-fading, rich cadmium orange with exceptionally large, smoothly finished flowers of semi-flaring form. Even the beard and the style arms carry the same glowing and vibrant orange color. Mid-late. 38". (Seedling Y-40 x Francelia)

COURTIER (D. Hall 1947) **\$1.00**

Deep in color, a charming flamingo pink of medium size. The deep tangerine beard is very prominent. Branching is good. It sets seed freely. Winter hardy. Mid-season. 30".

CUSTARD (T. Craig 1950) **\$1.50**

A splendid smooth large soft yellow plicata, lightly sprinkled and sprayed with cinnamon brown. 40". (Rich Raiment x Mitchell's No. 4155)

DAMASCUS BLADE (C. G. White 1953) **\$9.00**

Huge showy flowers in steel gray, overtones of mauve pink and brown, complete the enigma. Large blooms. A one-quarter onco, it is hardy, even in New England. Very late bloomer. 38".

DANCING DEB (Tompkins 1952) **\$5.00**

Light heliotrope in color, this flower is well-favored with broad petals and wide hafts. Petals are gracefully ruffled, form is excellent, standards are becomingly arched and domed, falls are saucily flaring. ((Delilah x Seashell) x (Jake)) Honorable Mention 1953.

DARK CHOCOLATE (Murray 1954) **\$25.00**

This is a real advance in the dark browns, possessing a true dark chocolate color and being a complete self. It is beautifully formed and the broad fall petals have a slight ruffle that adds to the charm of a heavy-substanced flower. It flowers over an extended period. For the home gardener who wants profuse flowering this iris is ideal. Its solid chocolate coloring is rich, dark and commandingly different. (Tobacco Road x Grand Marshal) Highly Commended 1953. Honorable Mention 1954. Mid-season. 38".

DAWN REFLECTION (Stevens 1948) **\$3.00**

This is a very lovely plicata with the old time favorites, Tiffany and Madame Louis Aureau as its ancestors. The immense blooms have a ground color of glitsering ivory with a definite sparsely etched rose-pink on the falls. The standards are superimposed with a bright lilac-pink etching. 36". stalks. Mid-season.

DEEP MAROON (Muhlestein 1952) **\$10.00**

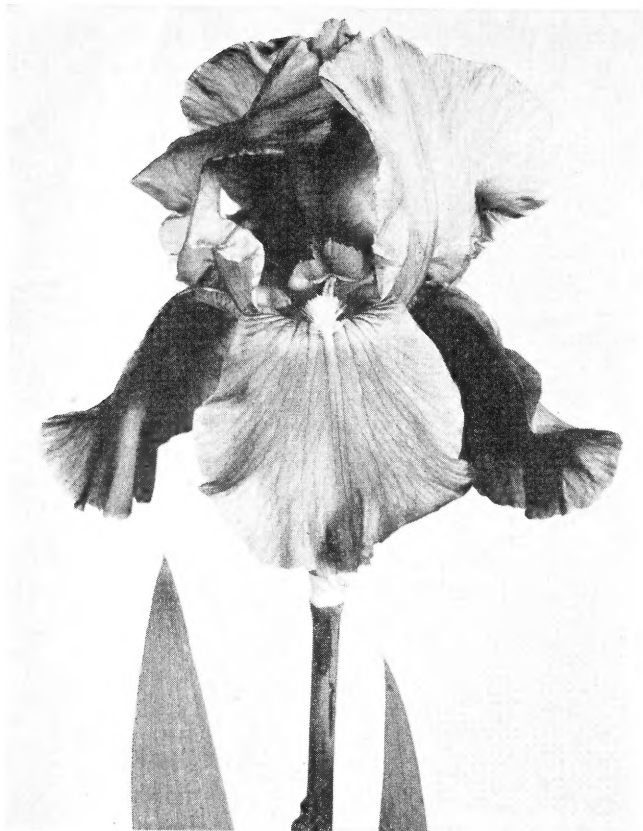
In producing clear coloring on the fall petals, this border plant of deep red should qualify as an exceptional parent. Standards are slightly lighter than the falls, the deep maroon predominating. Good branching, clean finish. ((Rubeo x Garden Magic) x (Garden Glory))

DEFIANCE (Tompkins 1953) **\$35.00**

Certainly a commanding red flower of rich cardinal, nearly crimson-red self color. Smooth, velvety texture, excellent form and substance, and free of marking or veinings. Stands lots of sun. Nicely branched. Mid-late. 36". (Manana x Technicolor) Honorable Mention 1953.

LYONS ISLAND OFFERS MANY SPECIES OF IRIS

- DESERT SONG** (Fay 1946) **\$1.00**
An outstanding cream-colored iris. Beautifully flared and ruffled. Excellent substance and clean hafts. Blooms over a long period. Early mid-season. 36". Award of Merit 1949.
- DESERT TWILIGHT** (Miess 1952) **\$10.00**
A pastel shade of delicate violet-lobelia, fused with a warm mauve-wood brown at the haft. Deep golden beard. A slightly ruffled bloom with a pleasing flare form. Mid-season. 38". (Sierra Snow x Ming Yellow) Honorable Mention 1952.
- DOLLY VARDEN** (David Hall 1950) **\$7.50**
In color, a light pink with a slight over-lay of salmon. Good form, splendid substance and well branched flowers that withstand hot sun remarkably well. 36". (Pink seedling No. 44-26 x Courtier) Honorable Mention 1950.
- EBONY ECHO** (Tompkins 1948) **\$5.00**
A rich deep carmine with a satin finish and blackish-red overlay. The flowers are large and have very broad ruffled standards and horizontal falls of surpassing loveliness. Mid-season. 38". (Cape Bon x Casa Morena) Honorable Mention 1949. Award of Merit 1953.
- ELIZABETH OF ENGLAND** (Miles 1946) **\$2.00**
A beautifully ruffled flower of an exquisite azure blue that holds its color. Well proportioned flowers of heavy substance and finish make this a unique addition to the blue class. 36". Mid-season. (Typhoon x Lagoon) Honorable Mention 1952.
- EL PASO** (Kleinsorge 1949) **\$1.50**
Here is another luminous, metallic finished, rich golden brown. It is beautifully branched. Flowers are of pleasing size and flaring form. 32". (Tobacco Road x Goldbeater) Honorable Mention 1950.
- EMPRESS EUGENIE** (D. W. Lyon 1952) **\$5.00**
Deepest of deep empire yellow self, with an intense buttercup yellow beard. Its pure clean coloring has no haft markings. The light spray of garnet brown at the base of the petals gives depth to the flower. The standards arch gracefully, very wide falls are saucer flaring and heavily subtended. Mid-season. 35". (Char-Maize x Cordovan) Honorable Mention 1954.
- ENGRAVED** (Craig 1952) **\$7.50**
Another Eupogocyclis hybrid. Its steel blend ranges from white to pale pearl shell gray, with heavy all-over pattern of deep neutral gray veins. The name of this exceptional onco-plicata implies its similarity to a gray steel engraving. (Mariposa Mia x Capitola) Honorable Mention 1953. 36".
- ENVOY** (DeForest 1948) **\$3.00**
A smooth dark iris whose rich standards are flushed reddish purple, and the falls are a near black with a burnt orange beard. Late mid-late. A grand color. 34".
- EVENSONG** (Jacobson 1950) **\$2.50**
Minyon and Patriarch purple oncobred with wide petals, somewhat resembling pure oncos in form. Mid-season. 34". Honorable Mention 1950.
- FAIRY FANCY** (H. Sass 1953) **\$5.00**
A lovely "fancy" with a chalk-white ground color and a bright blue overlay that leaves a pansy-like pattern of white at the throat of the flower. Mid-late. 38".
- FANCY FEATHER** (Muhlestein 1952) **\$5.00**
A novel and exciting new plicata. The standards are blended yellow-buff with no plicating. The falls are the same ground color heavily plicated in red. Nicely formed flowers on 36" stalks. Mid-season. ((Rare Marble x 46-49A) x (Salar x Gold Ruffles))
- FANTASY** (D. Hall 1947) **\$3.50**
Most attractive lovely tones of rose and orchid-lavender with a flush of golden yellow at the throat of the flower. The tangerine beard illuminates this fantasy of color. Not a tall iris but when it blooms, four blooms open at one time on the well branched stalks, giving us a profusion of dainty coloring. Blooms again in the fall for us. Award of Merit 1949. Mid-season. 30".
- FAR HILLS** (J. Wills 1949) **\$1.00**
Charming and unusual, this deepest of orchid-pinks has broad domed standards and full slightly ruffled falls. The smooth firm finish with no haft reticulations creates a most effective garden subject. Mid-season. 38". (Melanie x Copper Rose)
- FIRECRACKER** (D. Hall 1943) **\$1.00**
This is a bright red plicata. The flower is yellow, heavily stitched and etched in a glowing dark burgundy red. Mid-season. 32".
- FLAMBOYANCE** (Tompkins 1952) **\$5.00**
A compelling combination of mulberry, violet and rich rose. The petals are very broad with extra heavy substance and lacy, crimped edges. Mid-season. 36". ((Sonatine x (Veishea x Copper River)) x Mulberry Rose)
- FLAMINGO BAY** (Muhlestein 1953) **\$15.00**
A deep and distinct pink of good size and height with beautifully flaring falls and good substance. Mid-season. 36". (Salmon Shell x Pink Formal)
- FLURRY MOHR** (C. Rees 1950) **\$1.50**
A sensational oncobred, huge in size, violet-purple in color. This iris should appeal to flower arrangers inasmuch as its weak point (weak standards) will allow the flowers to be arranged into a flat Japanese iris type for exotic effects. (Snow Flurry x Capitola)
- FRANCES CRAIG** (Craig 1952) **\$10.00**
A superlative oncocyclis hybrid. The immense pale greyed lavender flowers on tall (44") stems are a breathtaking sight. In form, it shows the onco characteristics, and is of very fine quality. (Snow Flurry x Capitola) Highly Commended 1951. Honorable Mention 1953.
- FRANCES KENT** (DeForest 1951) **\$7.50**
Dainty and refreshingly sweet flowers in soft pastel colors. Standards blended chartreuse cream flushed pinkish apricot; falls cream, with a pinkish tangerine beard surrounded by a pink flush. Mid-season. 34". (SQ72 x (Melitta x Pink Seedling)) Honorable Mention 1952. Award of Merit 1954.
- FROSTY** (Craig 1950) **\$5.00**
An appropriately named and beautifully ruffled crisp clear frosted white plicata with a violet etching around the outer edges of the petals. 40". Many blooms open at one time. ((Tiffany x Los Angeles) x Mitchell's 0-50)
- GALA FINALE** (DeForest 1950) **\$3.50**
A very red and yellow plicata. The soft yellow ground color is heavily stitched, etched or sprayed, with a rich Indian red. Flowers are of good size and have a flaring form. Highly Commended 1949. Honorable Mention 1952. Mid-season. 38".
- GALLANT KNIGHT** (Tompkins 1953) **\$10.00**
A deep mahogany blend with standards of glowing red-brown with a smoky undertone and falls of rich chocolate-red or mahogany. Velvety texture, good ruffling and branching. Mid-late. 36". (Prairie Fire x Garden Glory) Highly Commended 1951.
- GARDEN GLORY** (Whiting 1943) **\$1.00**
Rich bordeaux-red blooms with no haft reticulations and a deep bronze-gold beard which helps to accent the enameled smoothness of this splendid red. Mid-late. 33". (Matula x Garden Magic) Award of Merit 1947.
- GARNET GLOW** (Sass 1951) **\$6.00**
A vivid garnet-red self with a rich, deep red beard. The flowers are large and flaring with heavy substance and smooth finish. A difficult pod parent but should prove an excellent pollen parent. It comes from Rameses, Midwest Gem and Prairie Sunset lines. Mid-late. 38". Honorable Mention 1949.
- GAY BORDER** (DeForest 1949) **\$1.50**
A plicata patterned in light maroon-rose and white. The flowers are a clear white, bordered with a margin of bright maroon-rose stitchings about 3/8" wide. Honorable Mention 1949.



CHIVALRY

- GAYLORD** (G. Douglas 1949) **\$10.00**
Famous and sensational amoena. It is said to "have everything." A large flower possessing excellent substance and form, with standards pure white and beautifully ruffled, flaring falls, deep blue with a reddish violet tinge. Just a hairline of white appears around the edges. A luxuriant full orange beard. Very late bloom on 3-way branched 40" stalks. (Extravaganza x Wabash) Honorable Mention 1949.
- GAY ORCHID** (Muhlestein 1949) **\$2.00**
A large, flaring orchid flower with a contrasting tangerine beard. Early mid-season. (Nylon x Golden Eagle) Honorable Mention 1949.
- GENE WILD** (Craig 1952) **\$12.50**
A "fancy" in warm white with old rose plicatings. A prime example of the novel pattern for which Craig has become so well known. Mid-late. (Rich Raiment x Joseph's Mantle) Honorable Mention 1954.
- GINGER** (Schreiner 1953) **\$6.00**
A ginger colored blend with plenty of spice and a lacquered finish. A seedling from Casa Morena, with improved form and size. The spicy coloring is intensified at the haft. Mid-late. 37".
- GLISTENGLOW** (Muhlestein 1949) **\$1.00**
Very wide, heavy-substanced white, with a bit of ruffling. Moderately branched. Early mid-season.
- GLISTENING COPPER** (Muhlestein 1953) **\$12.00**
A deep copper color of intense and yet brilliant coloring. Smooth in finish and most attractive in the garden. Mid-late. 34". (Honeyflow x (Prairie Sunset x Tobacco Road)) Highly Commended 1951.
- GOLDEN PLOVER** (DeForest 1950) **\$5.00**
One of the most beautiful and smooth flowers in its color class. A large golden tan that draws exuberant remarks in any garden. Smooth self, fine flaring form, and bright. Late bloomer. (Calderilla x Tobacco Road) Honorable Mention 1951. 38".
- GOLDEN RUFFLES** (C. C. Taylor 1946) **\$1.50**
One of the finest in the golden-yellow class. Beautifully and generously branched 40" stems, carrying many large ruffled blossoms of heavy satiny texture and perfect flaring form. Mid-season. (Margaret Bond x Vivaceous) Award of Merit 1949.
- GOLDEN RUSSET** (Hall 1946) **\$2.00**
Gigantic in size, and of a pleasing golden russet color for which it has been named. The buds are as much as 6" long. The standards and the falls are well proportioned in width for its great size. Honorable Mention 1947. Award of Merit 1952. 40".
- GOLDEN SHADOWS** (C. Rees 1952) **\$5.50**
Huge, warm white having an outpouring of gold from the center of the flower. Mid-season. 36".
- GOLDEN SHELL** (Goodman 1954) **\$12.00**
With all the gold in its parentage (New Gold x Spun Gold) this variety could hardly help being deep yellow. Large, domed and closed standards with a crimped finish like a seashell. Heavy substance, wide branching with good placement. Mid-season. 44".
- GOLDEN SYMPHONY** (Horton 1944) **\$2.00**
A symphony in colors. The standards are yellow and the falls are of lavender-blue. An impressive and novel combination. Very late bloomer. (Plurabelle x Rameses) Honorable Mention 1950.
- GOLD RUFFLES** (Muhlestein 1947) **\$1.50**
A grand medium deep yellow with Chantilly type edging; showing lots of gold. Good substance and winter hardy. Mid-late. 38". (Mary Rich Lyon x Midwest Gem)
- GOLD SMOKE** (Clark 1952) **\$7.50**
Lustrous smoky gold with a suffusion of soft lilac in the center of the broad falls. The beard is brownish tan. 34".
- GOLD SOVEREIGN** (Whiting 1949) **\$2.00**
A ruffled vivid cadmium yellow self. Medium sized flowers and only fair branching on 34" stalks. Mid-season. Winter hardy. (Ola Kala x Rocket) Honorable Mention 1950. Award of Merit 1953.
- GOOD NEWS** (Kleinsorge 1946) **\$1.50**
A wide, ruffled, brilliant mustard colored iris with a narrow band of copper shading near the outer edges. 33". (Mexico x Tobacco Road) Honorable Mention 1947.
- GRACIOUS LADY** (Carl Taylor 1952) **\$3.00**
Glamorous and enchanting in that rare shade, powder blue, on smoothly finished large, flaring tailored flowers of excellent quality. No haft markings or texture veining to be seen. 36". Early mid-season. Winter tested. (Lake George x Great Lakes)
- GREAT DAY** (Tompkins 1953) **\$20.00**
A rich, glowing carmine with clean hafts, heavy substance and a rich, glossy finish enhanced by some carmine-black overtones. Mid-season. 36". (Ebony Echo x Manana)
- GREENGLOW** (Muhlestein 1949) **\$1.00**
Here is an innovation in whites, a white with a faint flush of green. Flowers are good size and slightly ruffled. Highly Commended 1948. Mid-season. 36".
- GREEN MOHR** (Muhlestein 1951) **\$3.50**
This very odd creation is a strong green-chartreuse. The falls show a flush of lavender below the beard. The greenness is most apparent in the buds and flowers when first opened. Mid-season. 40". (William Mohr x Chosen) Mid-season. 40". Honorable Mention 1952.
- GREEN PASTURES** (Heller 1947) **\$1.25**
Huge blossoms of a chartreuse yellow, with a touch of blue at the beard which is most effective. The foliage is wide and tall. It is a prolific increaser. Hardy. (Old Ironsides x Oregon Sunshine) Honorable Mention 1947. Mid-season. 44".
- GREEN WHISPER** (Button 1949) **\$2.00**
A large, tailored flower of kidskin white with a faint green glow. This attractive iris came from two recessive whites of plicata breeding (Matterhorn x Jake). Early mid-season. 37".

LYONS IRISLAND OFFERS MANY SPECIES OF IRIS

- GYPSY CLASSIC** (DeForest 1950) **\$5.00**
Here's a rich one. Imagine a bloom of royal brown and then give it a distinct overlay of henna and you will get some idea of the quality of this flower. Add relief by painting the style arms deep gold and giving the beard an orange glow and you have a pretty fine picture. Mid-season. 36". (Nightingale x (Prairie Sunset x Tobacco Road)) Honorable Mention 1952.
- GYPSY ROSE** (Whiting 1946) **\$1.00**
Rich tapestry red with a coppery infusion, and accented by a blue blaze on the falls. Luxuriant yellow beard. Mid-season late. 38". Honorable Mention 1949.
- HAPPY BIRTHDAY** (D. Hall 1952) **\$8.00**
A flamingo pink. Said to be twice as large as Heritage, deeper in color than Ballerina and larger than Pink Sensation. The color is rich and clear light pink with tangerine beard. Large flowers with crimped and ruffled edges. Good substance. 36". Honorable Mention 1952. Award of Merit 1954.
- HAPPY MEETING** (David Lyon 1955) **\$25.00**
See introductions, page 4.
- HEATHER ROSE** (Hall 1950) **\$2.50**
This is a new and different shade of rosy orchid-pink. Near that of Scottish heather. Vigorous grower and a free bloomer. Winter hardy. Honorable Mention 1951.
- HEIGHO** (Craig 1949) **\$3.00**
Immense globe-like flowers of heavy substance with unusually broad and full petals. Smoothly colored, a clear bradley violet with a hint of a signal patch at the tips of the dull orange-gold beard. It starts blooming early and continues until late. Ideally branched, vigorous grower. 45". (Purissima x Capitola) Honorable Mention 1949.
- HELEN COLLINGWOOD** (K. Smith 1949) **\$7.50**
This neglecta is attractive in its color combination. The standards are light lavender, while the falls are a brilliant red-purple. Profuse bloomer. Mid-late. (Extravaganza x Louise Blake) Award of Merit 1952.
- HELEN MCGREGOR** (Graves 1946) **\$1.50**
Delightfully clear, very light blue iris which has no trace of lavender in it. The flowers have large broad round petals, beautifully ruffled. Extra heavy substance with an almost white beard. Mid-late. 36". Award of Merit 1948. Dykes Medal 1949.
- HERITAGE** (D. Hall 1949) **\$3.50**
Flamingo pink. Deeper than Cherie or Hit Parade. Smooth in texture, heavy substance, semi-flaring, slightly ruffled falls and no haft venations. The beard is a bright tangerine. 34". (No. 44-29 x Courrier) Award of Merit 1951.
- HIGHLAND FLING** (Lowry 1953) **\$5.00**
A bright red plicata with domed standards heavily flushed and stippled with deep, rich, red-purple. The falls are semi-flaring and white in color, neatly edged with the same red-purple as the standards. The entire flower is slightly ruffled, of good substance, graceful and refined. Mid-season. 36". (Tiffany x (San Francisco x Mme. Louis Aureau))
- HIGH SEAS** (Corey 1952) **\$8.00**
A blue-white, silky, ruffled. Well branched stalks, superb wide flowers—High Seas embodies what its name conveys. Should be useful in breeding blues and whites. (Snow Flurry x Cloud Castle) Highly Commended 1951. Honorable Mention 1952. 40". Early.
- HIGH-TOR** (Fielding 1952) **\$3.00**
Impressive as a garden subject on its tall sturdy well-branched stalks. The flowers are huge in size and ruffled in form. Chicory-blue standards with a tinge of lavender and falls slightly deeper in color. Floriferous and very fragrant. (Snow Flurry x Azure Skies) Honorable Mention 1952.
- HI-TIME** (Hall 1950) **\$3.00**
A luminous self of golden apricot color, with a deep tangerine beard. There are no haft markings to detract from the soft shimmering beauty of this delicately tinted flower. Medium large in size, fine texture and form. Honorable mention 1950.
- HIT PARADE** (D. Hall 1947) **\$1.00**
A flamingo pink of good form and substance. The color is between Courtier and Floradora, having larger, slightly ruffled flowers. It has the characteristic tangerine beard. Mid-season. 30".
- HONOR BRIGHT** (DeForest 1951) **\$3.50**
Chrome yellow ground, a suggestion of orange, a white patch on the falls—this potpourri goes into the making of Honor Bright, large flowered brown plicata. Spreading form, distinctly different. (Tif-fanja x Firecracker) Honorable Mention 1951.
- HURRICANE** (Craig 1949) **\$3.00**
A powder blue, suffused and flecked warm dark blue. Huge in size, admirably formed, showing it is an oncobred. Exceptional substance and texture. The flecking on this flower is indeed variable. 40". (Purissima x Capitola) Honorable Mention 1949.
- ILLUSTROUS** (Hall 1953) **\$5.00**
A late flower with large blooms of uniformly deep blue approaching indigo. With an inconspicuous beard, Illustrious' smooth hafts reveal a brown tone. Widely branched. 36". Very late. ((Gloriole x Louise Blake) x Nightfall)
- INCA CHIEF** (Mitsch 1952) **\$10.00**
Inca Chief lives up to its connotation of glorious wealth in color and size. A golden bronze, evenly flowing throughout. This is a royal flower of immense size. Outstanding. (Mexico x Tobacco Road) Honorable Mention 1952. Award of Merit 1954. Mid-late.
- INSPIRATION** (Stevens 1937) **\$1.00**
This is a fine, deep, rich rose color. Its huge, beautifully formed, smoothly finished, clear, even toned, lustrous rose-carmine coloring is unmarred by markings of any other than a slight brownish flush on the haft of the fall petals. Mid-season. 38".
- IVORY PETALS** (Sass 1952) **\$3.50**
There's no trouble separating this one from others in its class, for while it is of an ivory or cream base color it is a deep, smoky ivory with a solid undertone of pale chartreuse. Fine form, with large, smooth, broad petals and heavy substance. Mid-late. 36".
- JALLAH EFFENDI** (C. White 1952) **\$9.00**
A sensational and impressive oncobred in color blendings found only in the oncos. Its standards are a clear yellow-green with delicate mahogany veins, red splashed. Its falls are yellow, red veined around the mustard-yellow beard, and purple splashed.
- JANE PHILLIPS** (Graves 1950) **\$3.00**
A clear attractive medium blue self, smooth in finish and beautifully formed. The large flowers with domed standards and semi-flaring falls are lightly frilled at the edges. Winter tested. 38". (Helen McGregor x (Pale Moonlight x Great Lakes)) Award of Merit 1952.
- JUNE MEREDITH** (Muhlestein 1954) **\$30.00**
A large and rich deep pink self, deeper in color than Party Dress, but having that same smooth finish. Well-balanced in form and good substance. Its heavy tangerine-red beard blends into the color of the flower pleasingly and adds greatly to its beauty. Mid-late. 36". (Party Dress x Pink Formal) Highly Commended 1953. Honorable Mention 1954.
- JUNE SUNLIGHT** (McCormick 1953) **\$10.00**
This handsome yellow is a light cadmium self, having flaring falls suggestive of deep yellow velvet. Hafts without veining. Smooth coloring throughout. Large flowers, nicely branched. (Treasure Island x Spun Gold) Honorable Mention 1953. Late. 36".
- KALIFA FATIMA** (Oncobred) (White 1952) **\$5.00**
Grayish lavender, white and blackish purple, with a purple signal patch, go into the blend to bring forth Kalifa Fatima. It is like a wild oncocyclus, yet it has abundant pollen. Prolific bloomer. Honorable Mention 1952.
- KING'S JESTER** (Stevens 1948) **\$1.50**
An unusual and novel patterned plicata of heavy rose-maroon stitching and feathering on a silvery white background. The standards are more heavily marked than the falls. Mid-season. 38".

- KOL NIDRE** (David Lyon 1953) **\$15.00**
Colors are not infrequently compared to music, and Kol Nidre is actually named for the deep, sombre tones of a religious chant. The violet of the standards merging with the deep dahlia-purple and plum-purple tones of the falls are as vibrant and moving as the lower registers of a mighty organ. Variations on the theme are apparent in the still deeper tone of violet surrounding the warmer red-purple of the falls, and in the dark garnet-brown of the hafts. Beautifully formed, flaring flowers are carried in fine branching on 36" stalks. (Vice Regal x Down East)
- LADDIE** (E. Miess 1951) **\$4.00**
The large, well formed and ruffled blooms are a damson blue, infused with cocoa brown at the haft, possessing a rare and unusual silvery overlay. Fragrant and nicely branched. (Missouri x Great Lakes) Honorable Mention 1951.
- LADY ALBRIGHT** (Muhlestein 1950) **\$5.00**
One of the most sensational and colorful rich blends. The standards are dianthus (copper), and the falls amaranth (rosy deep lavender), edged the color of the standards. Mid-late. (Veishea x Bronzed Copper) Honorable Mention 1950.
- LADY DOZIER** (Dozier 1951) **\$10.00**
Oncocyclis kinship is evident in this large flower of rich cobalt or violet blue. The breadth of petals is a characteristic which places Lady Dozier among the favorites. (Ormohr x Brunhilde) Honorable Mention 1951. Mid-season. 35".
- LADY ISLE** (K. Smith 1951) **\$10.00**
Worthy of its splendid heritage. The large flowers, artistically ruffled, are of powder blue radiating an iridescent sheen. There are no reticulation markings. 41". Late mid-season. (Jane Phillips x Keene Valley) Honorable Mention 1952.
- LADY LOUISE** (Graves 1947) **\$2.00**
This flower has a variation of pattern that gives distinction. The standards, broad and ruffled, are of Colonial buff. The falls are iridescent white with a clear fluted border of the same buff which widens at the hafts around the orange beard. The styles are a slightly deeper buff. Olive-yellow buds with a lime-green midrib, showing very ruffled form, are a striking contrast. Mid-late. 44". (Snow Carnival x Katherine Larmon) Honorable Mention 1947.
- LAVANESQUE** (Schreiner 1953) **\$12.00**
We quote the originator's description: "Like an orchid-pink Helen McGregor in its classic perfection is this copiously formed, lacy frilled successor to Pink Plume. Lavanisque is likely to prove an iris of meteoric yet prolonged popularity. Connoisseurs of both form and color are lavish in praise of its beauty. Winsomely ruffled, yet neat as a pin, its exquisite orchid-pink tone is emphasized by a gold illuminated beard and haft." ((Dream Castle x (Angeles x ?)) x (Matula x Schreiner No. 8-37))
- LEADING LADY** (Lyll 1950) **\$2.50**
A large ruffled and very broad petaled flower with rich yellow standards and creamy white falls, edged gold. A lovely sight in the garden. 38". Mid-season. Honorable Mention 1950. Award of Merit 1954.
- LILAC LANE** (Whiting 1947) **\$2.50**
A pink toned lilac self with a pearly iridescence to emphasize its beauty and styling. Large wide petaled, heavy substanced, slightly ruffled and floriferous. Award of Merit 1951. Mid-season. 36".
- LIMELIGHT** (Hall 1952) **\$7.50**
Another canary yellow, having a hint of green but with the softness brought to mind by the name. Larger than Chantilly but possessed with its ruffles and lacings. Lighter area on falls, near orange beard, well branched and well spaced. (Sunray x Hall's Sdlg. No. 46-42) Honorable Mention 1952. Award of Merit 1954. 35".
- LOCKWOOD** (DeForest 1947) **\$1.50**
Enticing bright brown blend with an attractive blaze on the rounded falls. Smooth texture and well branched stalks. 36".
- LOTHARIO** (Schreiner 1942) **\$1.00**
This outstanding bicolor has richness, size and quality all rolled up together, resulting in a beautifully formed iris with light blue standards and rich blue-purple falls. Lightly frilled fragrant. 36". Mid-late bloom. Honorable Mention 1945.
- LOTTE LEMBRICH** (Lapham 1951) **\$7.50**
The shade of old fashioned lilacs is brought to view in this novel iris with deeper color on the falls and a light tangerine beard. Delicate, with perfect rounded form, heavy substance. Truly a sweet and alluring iris. Mid-season. 36".
- LOVELACE** (Mitchell 1948) **\$2.00**
This soft delicately stitched plicata is a picture of harmonious colorings. The standards are buff-white with a soft pink stippling, while the falls are a warm white completely edged with a soft pink stippling, deepening in tone at the haft. The flowers are crisp, flaring and slightly ruffled. 36".
- LOVE STORY** (Sapp 1950) **\$3.50**
One of the popular flamingo pinks, Love Story rises high and glazes as an aristocrat. It is tall and has a well-branched stalk. (Golden Eagle x Hall's Sdlg. No. 43-18) Honorable Mention 1950. Mid-season. 48".
- LYNN LANGFORD** (D. Hall 1946) **\$1.50**
The richest and most charming of the orchid pinks. The flower is large in size, good form and substance. It is of a deep toned orchid-pink, shading to golden yellow at the center around the beard, with no veinings. Award of Merit 1950. Mid-season. 36".
- MAJORETTE** (Miess 1953) **\$14.00**
Vivid in coloring, unusual. Light medium red-violet shading to deep red-violet on the fall petals, white beard, white plicata markings on the shoulders—these points have special charm. Flaring falls, graceful ruffling. Mid-season. 36". (Golden Gleam x Wayfarer) Honorable Mention 1954.
- MARDI GRAS** (K. Smith 1952) **\$12.00**
A colorful late blooming neglecta deeper in color than Helen Collingwood. The standards are light campanula violet, arched and silken, the falls of dark velvety purple are semi-flaring and have a smooth brown overlay at the hafts. The large flowers are well spaced on 40" stalks. Very outstanding. ((Extravaganza x 5-30) x Mme. Maurice Lassilly Ilse Louise)
- MARJIE** (DeForest 1950) **\$2.50**
A flower arranger's delight. Very ruffled medium sized flowers of deepest rich yellow, full of life, with smooth heavy substance and fine texture. Exceptionally well branched. 38". Midseason.
- MARY RANDALL** (Fay 1951) **\$15.00**
This is one of the most eagerly sought irises. Although it was introduced several years ago, stocks have never become abundant, owing to the continued demand. Deep rose pink self with tangerine red beard, a new color fusion. Finely formed, well spaced and nicely branched. (New Horizon x (Fay Sdlg. No. F2: Pink Cameo x Cherio)) Honorable Mention 1951. Award of Merit 1953. Dykes Medal 1954. Mid-season. 36".
- MARY VALENTINE** (Craig 1952) **\$15.00**
Among the finest of the blue Mohr hybrids, this is a self of soft powder blue that does not fade. It sports a blue beard, too. Good substance and branching. Early mid-season. 40". (Purissima x Capitola)
- MASKED BALL** (Buss 1949) **\$1.75**
An unusual plicata pattern with the ground color a glossy white and the standards so heavily striated as to appear almost solidly colored a deep blue-purple. The falls are bordered the same blue-purple; the beard is blue tipped. Medium in size and semi-flaring in form. Mid-season. 34". (Gypsy Baron x ?) Honorable Mention 1952.
- MASTER NEIL** (Jensen 1952) **\$5.00**
Lover of the Mohr family will most certainly want this one when it is discovered that it is a plicata. The ground color is cream; the markings are delicately applied in a cinnamon-brown shade. Its pogocyclis blood is evident both in foliage and blooms. Early mid-season. 36". (Wm. Mohr x Stained Glass)
- MAXWELTON** (Norton 1952) **\$3.00**
This is a tan-gold blend with a deep orange beard. The standards are gold, deepening to tan gold as it reaches the top of the petals. The falls are bright metallic gold at the base and deepen to a tan-gold toward the bottom of the falls. 38". (Alexia Seedling x Cascade Splendor) Honorable Mention 1952.

MAYAN GOLD (McKee 1951) **\$5.00**

Brilliant golden yellow, large petaled flower. It has a slightly ruffled form; has been commended as a parent for orange and reds. Mid-season. 37". (Jericho x (Moontide x Orange Gem))

MAY HALL (Hall 1954) **\$25.00**

This is considered to be Mr. Hall's best flamingo-pink to date, and he has introduced many. The color is clear and bright—a light pink, near that of Happy Birthday, but with different form and with a vivid tangerine beard. Mid-season. 36". (Dolly Varden x Pink Seedling 49-13) Honorable Mention 1954.

MAYTIME (Whiting 1950) **\$9.00**

Refreshingly different; a pink amoena. Its standards are orchid pink with deeper rose pink falls. Possesses great color appeal in its crisp form and clearness of colors which follow down into the heart of the flower. Ornamented with a white beard. 36". Mid-late. (Shannopin x Pathfinder) Award of Merit 1953.

MELLOWGLOW (Whiting 1942) **\$1.50**

This mellow, glowing blend is one of the most outstanding. A deep peachy apricot with a flush of pink smoothly blended on the wide and arched standards, with broadly rounded falls. Mid-season. 38".

MELODY LANE (D. Hall 1949) **\$3.50**

Bright glistening golden apricot for your garden. Large blooms, somewhat ruffled with good form and tangerine beard. It is an early bloomer. 36". Award of Merit 1952.

MEMORIES (Sass 1953) **\$20.00**

Carrot red! This is an intensification of pink that ends up a most commanding color, with an even deeper red beard. The flowers are large, with broad, heavy-substanced petals and good form. Mid-late. 36". (Sass Seedling 48-196 x Pink Sails) Honorable Mention 1953.

MIDNIGHT BLUE (Schreiner 1954) **\$8.00**

About halfway in color between its parents, Black Forest and Chivalry, this blue-black variety has silky, deep violet overtones. Beautifully uniform in depth and intensity of color, it makes a lovely, floriferous garden clump. Early mid-season. 34".

MOHR AFFAIR (Walker 1953) **\$5.00**

A Eupogocyclus hybrid in red-violet, with the falls heavily washed a rich deep wine. Large perfectly formed flowers; stalks are erect, and well branched. (Wm. Mohr x Golden Majesty) 30".

MOHR AND MORE (Muhlestein 1953) **\$10.00**

Eupogocyclus hybrid, violet self. For hybridizers striving for beyond-the-usual, Mohr and More is intriguing, for it has a tendency to produce flowers with four standards and four falls. 40". (Aldura x Capitola)

MOHRESQUE (A. D. Keith 1950) **\$2.00**

Strange and odd colorings. The standards are light brown, the falls are yellowish-buff, changing to near chartreuse at the beard. In addition, there's a purplish falking all over the falls. Early bloomer. 38". (Doxa x Zwannenburg)

MOHR MAJESTY (M. R. Walker 1952) **\$7.50**

Large well rounded buff colored flowers. The standards are clear and without markings. The falls are broad and overlaid with wine color. The branching is good. 36". (Wm. Mohr x Golden Majesty) Honorable Mention 1952.

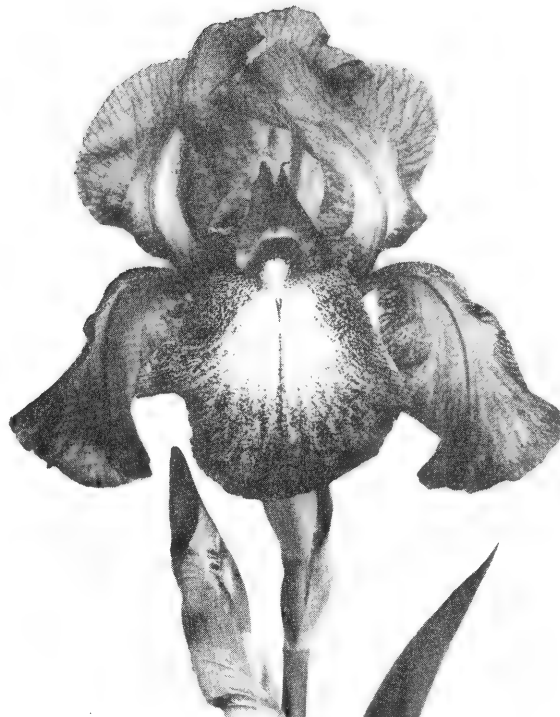
MOLTEN (Craig 1950) **\$4.00**

A luxuriant blending of burnt sienna, rose and ochre, with a violet-blue blaze. This iris is proving itself to be of value in hybridizing, especially for reds. Beautifully branched, tall. (Prairie Sunset x Sultan's Robe) Highly Commended 1947.

MONTECITO (Milliken 1950) **\$4.50**

An appealing and charming picture is painted by nature in this network of cool deep lemon-yellow and frosty white. The closed standards are of pale lemon yellow. The falls are a crisp satin-finished deeper lemon-yellow, with a highlight of smooth frosted white in the center section. The tip of the beard is white, changing to soft yellow as it works down into the throat. 35".

DON'T BE CONTENT WITH BEARDED IRIS ALONE!



FIRECRACKER

MOONLIGHT SERENADE (Naylor 1952) **\$6.00**

Although Moonlight Serenade is a warm white, it approaches a cream with its faint lemon reminder, the falls deepening slightly around the outer edges. Fall petals have graceful composition, as does the entire flower. Early mid-season. 40". (Snow Flurry x Hall's No. 42-10) Highly Commended 1951. Honorable Mention 1952.

MOONLIGHT SONATA (Stevens 1946) **\$1.50**

Pretty nearly an exact lemon-yellow in color, this uniformly colored variety distinguishes itself by fine notching or serrations along all petal edges. Late blooming. 36".

MT. McKINLEY (Schreiner 1947) **\$1.00**

This is a Wabash and Amigo seedling. An amoena, with standards soft clear white with a blue flush, and the falls deep purple edged pale blue. Early mid-season. 36".

MYSTIC MELODY (Stevens 1951) **\$5.00**

This is a sister to Summit. While there is not as much color contrast in Mystic Melody as there is in Summit, we think the form is better and the petals broader. The enamelled butter-yellow falls create a "melody of sweet music" with the standards of soft cream. An impressive iris. 39". Mid-late. Honorable Mention 1952.

NEW HOPE (DeForest 1950) **\$3.00**

A plicata of clear, clean, crisp blue and white. The large ruffled flowers are white, bordered with medium violet-blue stitchings. The beard is blue tipped. Fine substance and beautifully branched. 36". Excellent plicata background. Honorable Mention 1951.

NEW HORIZON (Fay 1946) **\$1.00**

A choice variety in the peach-pink colorings. It is almost a self, with the tangerine beard, and pink buds. Flowers are of good size and substance and are carried on tall well-branched stalks. Honorable Mention 1947. Late. 38".

NEW SNOW (Fay 1946) **\$1.50**

White as new snow. The beard is of bright yellow, the only color on the entire flower, as there are no haft markings. In form, it is ruffled and flaring. Mid-season. Hardy. 38". (Snow Flurry x Katherine Fay)

- NIGHT LIFE** (Muhlestein 1948) **\$3.00**
This has good background for breeding dark colors. Night Life, a striking "black," is large and stylishly formed. Mid-season. 34". (Storm King x Sable)
- NIGHT MOTH** (T. Craig 1950) **\$5.00**
An oncocyclis hybrid, showing onco-marked flowers, and the vigor-ousness of Eupogon growth. A pale wisteria, veined and stippled at the haft and throat of the flower, with a small deep violet signal accent at the tip of the beard. Early. 36". ((Advance Guard x M2-21) x Jumna)
- NORTHWESTERN** (F. Cook 1952) **\$10.00**
A majestic royal purple. This is an example of what irises ought to possess in the way of quality. The deep purpleness causes flower-lovers to look at it repeatedly in the garden. Good breeding back-ground, good form, slightly ruffled petals and winter hardy. (Gulf Stream x Blue Glow) Honorable Mention 1951. Award of Merit 1953. Mid-season. 38".
- ONE CLEAR CALL** (Tompkins 1951) **\$7.00**
A large iris, pure white with broad heavily ruffled petals, white beard with yellow tip. This is truly a fine iris. ((Pattison Sdlg.: Sister to Azure Skies called Fleecy Skies x Katherine Fay) x Ave Marie) Honorable Mention 1951. Midseason. 35".
- ORELIO** (DeForest 1947) **\$1.00**
(Pronounced Or-el'-yo.) This is a Casa Morena and Garden Flame cross. It is a bright rich brown-red. Flowers are of medium size, nicely branched. Honorable Mention 1948. Mid-late. 35".
- ORIENTAL GLORY** (Salbach 1950) **\$7.50**
This is a stunning iris. The standards are a velvety mahogany-red, with falls of very rich, deep chestnut-brown, shading to gold near the haft. There is a brilliant blue blaze in the center of the falls, and the beard is orange-yellow. Blooms are nicely formed on well branched stems. Honorable Mention 1952.
- PACEMAKER** (Lapham 1950) **\$3.00**
Red iris fire one's enthusiasm. Here is a bright red with a silken finish. A smooth, even textured self, with a velvety finish. No venations on the haft. Three and 4-way branching on 35" stalks. Early mid-season. Honorable Mention 1950.
- PAGAN PRINCESS** (G. Douglas 1948) **\$2.00**
In this iris we find a pleasing, new and remarkable color. Persian pink standards and persian rose falls, contrasted with a tangerine beard. It is stunning. Honorable Mention 1948. 36".
- PALOMINO** (D. Hall 1952) (No. 49-26) **\$12.00**
An exciting progeny from Hi-Time. The falls are pale ivory with an amber-copper overlay at the hafts, which extend around the outer edges in a narrow band. The beard is rich and reddish-orange. The standards are a blend of ivory, soft amber-copper and pink, with the pink deepening and accented at the base of the petals. 36". Honorable Mention 1952. Award of Merit 1954.
- PARTY DRESS** (Muhlestein 1951) **\$6.00**
A grand ruffled deep pink of heavy substance and smooth clear coloring. It is much deeper than the famous Pink Formal. The flower is medium size with semi-flaring falls and closed standards. Blooms mid-season to late. 34". ((45-22A: Lancaster x Hall's 42-10) x 46-22B: Sister to Pink Formal) Highly Commended 1950. Honorable Mention 1951. Award of Merit 1954.
- PATHFINDER** (Whiting 1948) **\$3.50**
An addition to our rose-pink class. These wide, full-petaled, glistening textured rose-pink flowers have extremely heavy substance. The branching is close but the stems are strong. Vigorous and prolific of bloom. 35". Mid-season. (Mirabelle x Angelus) Honorable Mention 1948.
- PEG DABAGH** (Craig 1948) **\$1.00**
A Wm. Mohr derivative. Novel color of smooth clear blue-violet. Full rounded good-substanced flower. Early and longtime bloomer; heavy increaser. 40". Honorable Mention 1948.
- PEQUOT** (McKee 1952) **\$5.00**
This grand red demonstrates what may be accomplished in line breeding. Pequot is noted for its smoothness and evenness of deep coloring. A splendid iris in every way. Mid-season. 36". ((Lights On x Moontide) x Moontide)
- PIERRE MENARD** (Faught 1948) **\$2.50**
The standards, slightly open, are of hyacinth blue, with beautifully flaring campanula violet falls, veined hyacinth blue. Very heavy substance, and good branching. Mid-season. 36". Award of Merit 1950.
- PINAFORE LASS** (F. Cook 1951) **\$5.00**
Suggestive of the Japanese Iris in form and size. The fall petals are very broad and overlapping with the edges heavily ruffled in a most distinctive and original manner. From a glowing white in the center of the petals an ever deepening tint of lavender-blue blends imperceptibly to the deeper scalloped margins. A meritorious and unique iris. 38". Early mid-season. (Snow Flurry x White Wedg-wood) Honorable Mention 1952.
- PINK ACCENT** (Pattison 1953) **\$7.50**
A delicate blend with the standards in shades of pink and the falls white, lined with pink. 34". (Patrice x Cherie) Honorable Men-tion 1954.
- PINK BOUNTIFUL** (Cook 1949) **\$2.00**
This exotic orchid-pink has a smooth satin texture and fine sub-stance. Beautifully formed flower with broad petals on nicely branched 38" stems. Midseason. Honorable Mention 1951.
- PINK CAMEO** (Fay 1946) **\$1.00**
One of the most famous flamingo pinks. Its deep, pure pink, long-pointed buds open into delightful translucent cameo pink, enriched by the tangerine-orange beard with which these varieties are en-dowed. The smoothly finished blooms are well placed on nicely branched stems. Award of Merit 1948. Early mid-season. 36".
- PINK CONFECTION** (Muhlestein 1953) **\$6.00**
Like a baby-ribbon in color is this wide, somewhat ruffled pink which has falls considerably lighter than the standards. Mid-late. 40". (Hall's Sdlg. No. 44-09, sister of Hit Parade x Pink Formal)
- PINK ENCHANTMENT** (Muhlestein 1954) **\$35.00**
The crowning glory of this flower is the depth and strength of its lovely pink color. The medium-sized flowers of good substance are carried on 32" stalks. Holds color well in full sun, and the rich cerise-red beard reflects added brilliance into the flower, further intensifying the pink. Early mid-season. (Raspberry Ice Cream x 49-11) Honorable Mention 1954. Stock limited.
- PINK FORMAL** (Muhlestein 1949) **\$4.00**
This is one of the most talked-about pinks. Rated very highly. Large ruffled deep pink with a salmon influence. The beard is intense red-tangerine. Of heavy substance that withstands the hot sun. Beau-tifully branched 38" stalks. (Golden Eagle x Loomis S Q 72) Award of Merit 1951.
- PINK FULFILLMENT** (Muhlestein 1954) **\$35.00**
Another of Tell's fabulous pinks, this one the winner of the Presi-dent's Cup at the 1954 A.I.S. convention. It is rich and deep, of exceptional size, substance, quality and beauty. Full, round, flaring flowers on 38" stalks. Mid-late. A nice, complicated parentage: ((47-72: Gold Ruffles x 45-64-1A: Alice Harding x Dr. Loomis' "Type Dore") x Pink Formal) Honorable Mention 1954.
- PINK MATRON** (Carl C. Taylor 1950) **\$1.50**
A most delightful pink blend. Very smooth texture with full rounded petals, flaring form, and pleasing size flowers. Winter hardy. 40".
- PINK SENSATION** (Hall 1948) **\$5.00**
This is one of David Hall's world-famous flamingo pinks, with a tangerine beard. A true, deep pink with laced edges that do not fade. In form, the petals are large, full and rounded. 35". Early. A grand iris. Honorable Mention 1950. Award of Merit 1952.
- PINNACLE** (Stevens 1949) **\$2.50**
Tranquil in its color combination. Its standards are clear cool white, contrasted with smooth primrose falls. Luminous enamel finished flowers. Midseason. 35". Award of Merit 1951.



HELEN McGREGOR

PLUM PRETTY (DeForest 1949) **\$2.50**
A most attractive and unusual color of blue plums or grapes. Smooth and trim, it blooms 33" tall in mid-season. (Calderilla x Tobacco Road)

PORT WINE (Sass 1950) **\$7.50**
A very dark red and white plicata. The ground color is white. The standards are heavily sprayed in wine red. The falls are heavily sprayed around the outer edges in the same wine red. This is a sensational iris. 38". Mid-late. (45-47 x Starless Night) Honorable Mention 1950. Award of Merit 1953:

PRAIRIE JEWEL (Sass 1953) **\$20.00**
A highly complicated cross which resulted in a most fascinating flower. The large flowers have domed standards of clear shell-pink contrasting strongly with broad, dahlia-red falls and a vivid red beard. A beautiful, jewel-like finish. (((Ola Kala x (Dore x Matula) x Rainbow Room) x Flora Zenor x Hall's Pink Sdlg.) Mid-late. 38". Honorable Mention 1953.

PRAIRIE SUNSET (H. Sass 1939) **\$1.00**
Dykes Medal winner 1943. A subtle blending of rich apricot, peach, rose, copper and gold. A self of indescribable iridescent colorings. The standards are slightly opened, falls flare. Mid-season. 34". Used extensively in hybridizing.

PREMIER PEACH (D. Hall 1946) **\$1.00**
This is not a pink iris but a peach iris, which has no haft markings to mar its delicate beauty. Flowers are a clear pinkish peach self of good size and form. Comparable to Haviland china. Honorable Mention 1946. Mid-season. 34".

PRETTY QUADROON (Kleinsorge 1948) **\$5.00**
Delectable, smooth, metallic light copper-brown with a hint of lavender and gold undertone. The beard is brown also. Standards are closed and falls widely rounded. Mid-season. 34". (Mexico x Tobacco Road) Honorable Mention 1948. Award of Merit 1950.

DON'T BE CONTENT WITH BEARDED IRIS ALONE!

PROSPECTOR (Kleinsorge 1950) **\$2.50**
Very deep golden yellow, almost an orange, with an ivory-white patch in the center of the falls. Closed standards and saucer flaring falls make a highly pleasing garden picture. 34". Honorable Mention 1951. Award of Merit 1953.

PURISSAMOHR (E. Weidner 1952) **\$10.00**
A sensational pure white oncobred iris. Proving itself to be a good grower and winter hardy. The large flowers with not a trace of color or markings, have beautifully domed standards and broad flaring falls. A soft golden tan beard is the only contrast on this heavy substantiated bit of enchantment. Rhizomes and foliage resemble the tall beraded iris, 3-way branch placement. It sets seed readily. 40". Mid-late. (Wm. Mohr x (Purissima x Easter Morn)) Honorable Mention 1952.

PURPLE MOOR (Lapham 1947) **\$1.00**
Massive, huge blooms of fully rounded form in a rich glossy purple. Very showy because of its large size, opening later than most bearded iris. 35".

QUECHEE (Knowlton 1950) **\$4.00**
An iris of distinctive form and richness of color. A handsome garnet-red self with broad-cupped standards, rounded flaring falls, and a thick short bronze beard. Very heavy substance and smoothness of finish give it resistance to sunburning. Good branching. Mid-season. 36". (Prince of Orange x Redyen) Honorable Mention 1950.

QUEEN'S TASTE (Douglas 1952) **\$8.00**
A lovely and novel color combination, with lavender-pink standards above semi-flaring blended red falls of pleasing richness. The hybridizer is intrigued by the amoena lines in the parentage (Criterion x Olympian) Mid-season. 38". Honorable Mention 1953.

RAINBOW ROOM (J. Sass 1946) **\$2.00**
Nature has set her stage in a rich creamy-buff and then taken her paint brush in hand, proceeding to blend a symphony of colors in a multiple of shadings of apricot and orange over the greater portion of the fall petals, dashing a splash of lilac toward the center, finishing off with a metallic blotch at the end of a bright yellow beard. Mid-season. 36". (H. Sass' No. 50-36 x Matula) Honorable Mention 1947. Award of Merit 1951.

RANGER (Kleinsorge 1943) **\$1.00**
A distinctive late blooming brilliant crimson-red with high, closed cone-shaped standards. Broad velvety falls. Fragrant. 34". Late. Award of Merit 1946.

RARE PEARL (Schramm 1954) **\$10.00**
One of the prettiest and most unusual of the large and varied Mohr family, this one is big and flaring, with the base color cream showing mother-of-pearl tones in the falls. A good grower; early mid-season. (Elmohr x Mt. Washington)

RASPBERRY RIBBON (Schreiner 1951) **\$7.50**
Plicated and stippled, crisply ruffled and excellently styled with its standards so heavily sprayed raspberry as to seem almost solid in color. The falls have retained that snowy whiteness with a band of raspberry sprayed and etched around the border, in a styling all its own. A subdued orange beard lends atmosphere. 34". Early mid-season. Honorable Mention 1951.

RAVEN WING (Milliken 1951) **\$4.50**
A dark purple of rare depth of color and with a sheen so pronounced that this is the feature you remember instead of the color itself. Domed standards, rippling, loosely ruffled falls and a heavy, dark beard. A dark beauty. 36".

REAL GOLD (Austin 1952) No. Ob-93 **\$8.00**
An oncobred that is almost a self and near approach to antique gold in color (not yellow). Standards are of glistening gold-buff and falls of a deep gold-buff with soft harmonizing veins and a golden bronze beard. It has onco characteristics with falls broad and quite flaring. Yields good pollen. This is not a tall iris. (20"). Mid-season. (Golden Majesty x Capitola)

RED MAJESTY (G. Douglas 1946) **\$1.50**
Majestic in its gorgeous, brilliant robe of eugenia rose, with a touch of yellow infusion at the throat, finished by heavy yellow semi-flaring blooms. Honorable Mention 1948. Late. 42".

REDWYNE (McKee 1945) **\$1.50**
A bright mahogany-red that is exquisite. Its unusual velvety falls with a rich texture and solidness of color have won praise for this outstanding red. Mid-season. 36". Often reblooms in the fall here in Southern California.

- REHOBETH** (DeForest 1953) **\$25.00**
Everybody has fallen in love with this satiny creation. The flowers are very large indeed, with exceptional substance, and the color is the softest conceivable sky-blue. Mid-season. 37". (Snow Flurry x Lake Shannon) Honorable Mention 1954.
- RELENTLESS** (P. Cook 1948) **\$1.00**
Firm textured flowers of a smooth, even toned, rich, deep red with no haft reticulations. Very colorful medium sized flowers of fine substance and texture, coming into bloom mid-late season. 32".
- RICH RAIMENT** (Craig 1946) **\$3.50**
A heavily stippled or sprayed plicata of cream ground color with red-brown stippling, referred to as a "fancy." When seen in the garden it is at first taken for a red-brown iris, the stippling is so heavily applied. Mid-season. 36". Honorable Mention 1950.
- RILLA GABBERT** (Carpenter 1946) **\$1.50**
Sparkling freshness is an attribute of this rose and gold blend with clean hafts. Does not fade or lose substance under trying weather conditions. Mid-season. 39". (E. B. Williamson x Sdlg. of Dominion heritage) Honorable Mention 1946.
- RIO VALLEY** (Tompkins 1951) **\$12.50**
A beautiful deep blend of bright golden brown, with a faint touch of electric blue at the tip of the beard. The flowers are large, broad-petaled, and of good form; the surface is like rich lacquer sprinkled with gold dust. Mid-late. 36". ((Three Oaks x Honeyflow) x Copperclad) x (Tobacco Road by Copperclad)
- RIPPLES** (Linse 1951) **\$3.50**
These large, broad, flaring blooms have wonderful substance, and are insouciantly rippled and waved. The color is old lilac, delicately blended olive-yellow around the border of the entire flower and across the hafts of the falls. 36". (Ormohr x Snoqualmie)
- ROCKET** (Whiting 1945) **\$1.00**
A true gem. A most outstanding deep orange iris. Brilliant, smooth, large flowers, majestically placed on 36" stalks. Standards are of deepest chrome yellow and the falls are really orange. Plant where blooms will be protected from the hottest midday sun. Mid-season. Award of Merit 1947.
- RODEO** (DeForest 1947) **\$1.50**
A yellow and brown plicata. Huge blooms of surprising substance and flaring form. Green gold background with white in the center of the fall petals, lightly patterned and stitched with buckskin brown. Beard is brown, tipped gold. Very showy and a heavy increaser. Honorable Mention 1949. Mid-season. 36".
- ROSA BARONE** (Lapham 1951) **\$6.00**
A delicate soft pink over cream, with a small short pinkish tangerine beard. The flowers are of good size, well rounded, with excellent substance. 37". Mid-season. (Bonny x Paradise Pink)
- ROSABELLA** (Kleinsorge 1951) **\$3.00**
A deep rose-red with a metallic copper flush through the haft section of the falls, extending up into the base of the standards. The prominent beard is a dull bronze-orange. Flowers are large and broad petaled with wide, flaring falls. A vigorous grower and appropriately named. 44". Honorable Mention 1952.
- ROYAL WISH** (Norton 1951) **\$4.50**
The standards on this large, flaring flower are a simple, deep golden yellow, but the falls show motley colors, the base being rose-pink blended with tan-gold on the shoulders and edged in gold. The beard is canary-yellow. Mid-season. 38". (Rainbow Room x Ola Kala) Honorable Mention 1953.
- RUFFLED APACHE** (Wallace 1954) **\$15.00**
This perturbed Indian is a big fellow of blended gold and red. Both the standards and the falls are heavily laced and ruffled, making this flower distinctly different from others in its color class. Runner-up for President's Cup at the 1954 A.I.S. Convention. Mid-season. 38". (Matula x Midwest Gem) Honorable Mention 1954.
- RUFFLED BOUQUET** (C. Rees 1947) **\$3.00**
A meritorious ruffled bi-cream in reverse. The standards are a deep cream, with falls light cream. This should make an interesting variation in the garden. It has our vote of praise. Early mid-season. 36". Honorable Mention 1952.
- RUFFLED ORGANDY** (Brenan 1953) **\$10.00**
The name Ruffled Organdy has been well chosen for this beauty. The broad ruffled falls are ivory-cream with a lavender-pearl flush; edges are etched in a light gold border. The hafts and beard are light gold also, giving brilliance and life to the flower. Standards, a deepened ivory, are domed and overlapping, with ruffled edges. The tall 5-way branching stalks with 17 buds will bloom fully a month. Winter hardy. (Gilt Edge x (Snow Flurry x Nylon)) Highly Commended 1952. Topped the list for Honorable Mention 1953. 36".
- RUSSET WINGS** (Wills 1946) **\$1.00**
This ruffled beauty has an inner glow. Peach tones deepening into russet are set off by the striking orange beard. Flowers are quite large. Midseason. 42". Award of Merit 1952.
- RUTH** (Innes 1950) **\$2.00**
A smooth rich yellow which reveals the characteristics of its parentage. The crinkled edges show the Gold Ruffles influence, thus providing an uncommon feature for a yellow. Centers of fall petals are deep cream, the border being the deep orange-yellow of the standards. (Ola Kala x Gold Ruffles) Honorable Mention 1951. Mid-season. 38".
- SADDLE BROWN** (Rees 1952) **\$6.00**
A brilliant saddle-brown self with a golden flush at the hafts. Mid-season. 40". (Aztec Copper x Sultan's Robe)
- SARAH LESTER** (Rees 1951) **\$4.00**
The yellow parade of spring may start with Sarah Lester, for this iris is the earliest of the yellow flowers. Large and flaring, this lovely smiles equally as well as a cut flower on your table as well as in your garden. Early mid-season. (Easter Sunrise x Prairie Sunset)
- SAVAGE** (T. Craig 1949) **\$5.00**
Startling and brilliant in a new color blend. Grand, stately formed blooms of excellent proportions and placement, blended bronze-red, suffused and blazing magenta.
- SEAFARER** (Butterick 1949) **\$5.00**
As might be expected from the name, the blue of the ocean is a feature of Seafarer. Clear and smooth medium shade, rounded flaring form. Pleasing in appearance, fine low branching. Mid-late. 36". (The Admiral x Great Lakes)
- SEÑORITA ILSA** (Rogers 1953) **\$12.50**
A pure white of flaring form with white beard, not a trace of color anywhere; standards beautifully domed and overlapping. Slightly ruffled falls with exceptionally wide hafts, heavy substance and good branching. (Helen McGregor x Sylvia Murry) Honorable Mention 1953.
- SIERRA SKIES** (Schortman 1954) **\$18.00**
These large, beautifully formed flowers are carried on well-spaced and ideally branched, tall stalks. In color they are near spectrum blue. This is the first iris that Mr. Schortman has allowed to be introduced after his many years of working with the "blues," and we are sure that it is destined to be a success. Early mid-season. 38". (Chivalry x (Santa Barbara x Sierra Blue)) Highly Commended 1953; Honorable Mention 1954.
- SKY RANGER** (Hall 1948) **\$1.00**
Tall 3-way branched stalks carry these large, stately, medium blue, heavily ruffled blooms; exhibiting themselves in a tranquil manner. Withstands adverse weather conditions. Mid-season. 44". (Bandmaster x Blue Seedling) Award of Merit 1952.
- SOLID GOLD** (Kleinsorge 1951) **\$10.00**
It is of the deepest yellow, huge in size, wide at the hafts and well proportioned. 36". Honorable Mention 1951. Award of Merit 1953.
- SONG OF SONGS** (Crosby 1950) **\$1.50**
A chantilly edged and fluted iris. The standards are light, creamy yellow, falls opaque white, edged light creamy yellow. Both standards and falls are chantilly laced and ruffled. This iris is destined to be a success. 38". Early mid-late. (Gold Ruffles x Cream Gold) Honorable Mention 1950.

SO SWEET (Mitchell-Lafrenz 1954) **\$5.00**

There's a translucent quality about this iris that makes you think of fine porcelain. The extra large flowers are a very pale blue and the falls combine a flare and droop to give verve and view in one glance. The coloring is purity itself, an effect which defies description. Early. 38". (Snow Flurry x Chivalry)

SPANISH PEAKS (Loomis 1947) **\$2.00**

The entire flower is white, even the heart and beard. Beautifully formed blooms, with broad petals. Excellent substance, fine texture and graceful branching. Honorable Mention 1948. Award of Merit 1950. Mid-late. 38".

SPELLBOUND (Lines 1951) **\$6.00**

A creation said to hold one spellbound in the garden. It is a big bold, glowing red with a golden overlay. The large flowers are horizontally flared with ruffled edges. The color does not fade. It has a fragrance of Clove Pinks. 42". (Tobacco Road x Prairie Sunset) Honorable Mention 1952.

SPRING MELODY (Miess 1954) **\$15.00**

A clear, dandelion-yellow iris with wide, ruffled falls and well-formed, domed standards. Good substance and even texture. A strong, commanding color. Mid-season. 40". Tested for hardiness in the North (Miess seedling 547B x Ola Kala)

SPRING ROMANCE (E. Miess 1949) **\$3.50**

Huge blooms of waxy cream-white with a frosty overlay and a deep infusion of aureolin gold at the hafts; with a deep orange beard. Well formed and heavy subtanced blooms. A vigorous grower and floriferous. 42". (Melitza x Narain) Honorable Mention 1950. Winter hardy.

STAR SHINE (J. Wills 1949) **\$4.00**

Deep cream, white and pearly blue so skillfully blended as to create an iridescent gleam of lustrous pearls. The deep cream standards are broad and domed; the beautifully flared falls, with just a suggestion of blue in the center of the white ground, are edged around the border with the deep cream of the standards. Here is superb originality. 36". Mid-late. ((Hermitage x Hernani) x Song of Gold) Award of Merit 1951.

STATEN ISLAND (Smith 1947) **\$3.00**

At the head of the list of variegatas stands Staten Island with its saucer-flare fall petals of bright velvety red and a tiny edging of yellow. The standards are a golden yellow with metallic sheen which draws a second look from every garden visitor. (The Red Admiral x City of Lincoln) Award of Merit 1951. Late. 36".

STORMY SKIES (Plough 1953) **\$10.00**

This dignified iris implies restraint in coloring, although no less unique in presentation. Smoke-gray and buff blend with a flush of violet on the fall petals; rich yellow beard. Large wide flowers, standards are beautifully domed, falls are flaring and slightly ruffled. (Arctic x Tobacco Road) Highly Commended 1952. Mid-season. 38".

SUMMIT (Stevens 1951) **\$5.00**

This yellow and white amoena comes to us from New Zealand, and is considered Mrs. Stevens' best. The standards are absolutely snow white and the falls are of deep golden yellow, creating beauty and appeal in this charming new color contrast. It should be a hybridizer's paradise. Mid-season. 40".

SUNRAY (Hall 1950) **\$2.00**

Ideally formed, large ruffled, light yellow with heavy substance, giving a rare sheen and brilliance. Excellent branching on 36" stems. Winter hardy. Honorable Mention 1951.

SUNSET BLAZE (Kleinsorge 1948) **\$2.00**

An unforgettable, rich, brilliant golden flame-salmon blend with a solidness of color and lots of fire; heavily influenced with burnished gold and a bright golden yellow beard. Flowers and stalk branching are good. (Seedlings No. 343 x 333) Winner of the President's Cup at the 1949 A.I.S. Convention. Award of Merit 1951. Early mid-season. 40".

SURRENDER (Tompkins 1951) **\$7.00**

Another fork in the road, so to speak. Here we have something in color patterns which varies from the usual. The flowers are large, petals broad and tailored. The color is a velvety almost-white with a bright canary yellow flowing over the hafts and upper fall, fading out around the edge of the fall in minute, plicata-like markings of yellow and a faint bit of pink. (Lamplit Hour x Pink Tower) Honorable Mention 1953.

DON'T BE CONTENT WITH BEARDED IRIS ALONE!



PINK FORMAL

SWEET MARIE (Muhlestein 1951) **\$3.00**

Large flowers in an appealing orchid with a rich tangerine beard. Possessing good substance with a beautiful finish. 36". Mid-season. Highly Commended 1950.

SYLLABUB (G. Douglas 1950) **\$4.50**

A soft flesh-pink self, even possessing a pink beard. There are no haft reticulations and it does not fade in the sun. It has closed standards, flaring falls and good substance. Four and five way branching. 28". Mid-late. Honorable Mention 1950.

TABASCO (Craig 1951) **\$6.00**

The hybridizer considers this one of his best plicatas. Rich and flaring in form, with exceptional texture. In color, gold, sprayed with paprika. Honorable Mention 1954.

TECHNICOLOR (Whiting 1950) **\$5.00**

A brilliant ruby-red self with just a hint of mahogany in its coloring and a light pattern of gold at the hafts. A good iris. Mid-season. 36". (Garden Glory x Rocket) Honorable Mention 1950.

TEMPLE BELLS (Hall 1952) **\$10.00**

Unparalleled in beauty, a smooth apricot, evenly spread over the entire flower. Gracefully curved, flaring falls, which are slightly ruffled at the edges. Adorned with a heavy reddish-orange beard. 36". Honorable Mention 1952. Award of Merit 1954.

THE MAD HATTER (Lyon 1951) **\$7.50**

The Mad Hatter is a deep maroon, with heavy velvety falls, which appear to be overlaid with blackish maroon. The standards are nicely arched, the branching is good, and the form is semi-flaring. Long blooming time. This cross gave a most pleasing fragrance to all of its progeny. Stalks are 42-44". Mid-season and late. (Ranger x Cordovan) Honorable Mention 1951.

- THOTMES III** (Kleinsorge 1950) **\$7.50**
A smooth self of glistening golden tan with a light bronze beard. Gigantic in size, extra broad falls, and heavy texture. 40" stalks. This iris has been named for a very, very early pioneer iris collector. Honorable Mention 1951. Award of Merit 1953.
- TINDALAO** (Milliken 1951) **\$4.50**
The general garden effect of this flower is a regular ball of gold. Large, beautifully formed and of good substance and texture this bright yellow self has a golden beard and gold venations surrounding it. Mid-season. 36".
- TOBACCO ROAD** (Kleinsorge 1942) **\$1.50**
A golden tobacco brown self of heavy substance and beautifully flared form. Always admired. Award of Merit 1946. 34".
- TOP SCORE** (Salbach 1949) **\$1.00**
A brilliant variegata of clear bright deep yellow standards, with rounded falls a rich chestnut brown to mahogany, clearly edged with deep yellow. A distinctive and colorful garden subject. Mid-season. 32".
- TOP FLIGHT** (Hall 1953) **\$7.50**
A deeper apricot color than Temple Bells with a fiery orange-red beard. Standards and falls nearly the same shade, a preferred flower. Honorable Mention 1953. 34".
- TRAIL BLAZER** (Milliken) **\$4.50**
A fiery red mulberry-purple, shot with blue at the tip of the beard. The blue spreads over the central portion of the falls. The beard is cinnamon, with a touch of deep red on the sides. The large, in-souciant flowers are carried on tall stalks (40").
- TRANQUILITY** (Fay 1950) **\$5.00**
One of the best whites, large milk-white flower, well branched, petals full and round, nicely flaring falls, domed standards, no markings. (Snow Flurry x Katharine Fay) Awards of Merit 1953. Mid-season. 38".
- TRANQUIL MOON** (P. Cook 1948) **\$2.00**
A novelty in light yellow to deep cream standards and sparkling silvery white falls edged with the same color as the standards. The falls are wide and quite flaring in form. 40". Mid-season. Honorable Mention 1950.
- TRULY YOURS** (O. Fay 1949) **\$10.00**
A refined iris of distinction. The under sides of the fall petals are a solid yellow. The heart of the flower is bright yellow, which shades into an almost white at both the top of the standards and the lower edges of the falls which are laced and ruffled at the edges like Chantilly. At the wide hafts there are gold threads radiating from the yellow beard. The closed standards and almost horizontal falls make a flower to hold one spellbound. Late. 38". ((Rameses x Far West) x Hall's No. 42-35) x Zantha) Award of Merit 1951. Dykes Medal 1953.
- TWENTY GRAND** (Norton 1953) **\$9.00**
The standards are canary yellow and the falls orchid in the center with a broad tan-gold border. The entire flower is very heavily crinkled or chantilly edged. The beard is orange. You'll admire the edging on this variety. Mid-season. 36". (Rainbow Room x Chantilly)
- TWILIGHT SKY** (Fay 1948) **\$1.50**
This lovely pink comes from a Pink Cameo x Floradora cross. Medium sized flowers on nicely branched 35" stalks. Tailored in form, it is a soft, clean, clear pink with a red tinged beard. Honorable Mention 1950.
- TWO SNOWS** (Mrs. E. L. Scott 1952) **\$8.00**
An ultra-white of medium flare, superior substance; withstands adverse weather conditions. Gold beard tipped with white. A heavy bloomer that varies up to 7-bud placements. Good branching. Two Snows won the Silver Medal at the 1952 Show of the New York Horticultural Society. Midseason. 40". (Snow Flurry x Snow Carnival)
- UTAH CREAM** (Muhlestein 1954) **\$15.00**
The cream-colored flowers are nice and large, with just the right flair to give them quality and style. Mid-late. 36". (Gold Ruffles x Sister to Cream Gold) Honorable Mention 1954.
- UTAH SUNSET** (Muhlestein 1951) **\$5.00**
Like the western mountains, Utah Sunset is huge. A bright colorful blend, this iris has smooth substance and commands more than a glance in the garden because of its size and the mingling of onion-skin pink, buff and salmon tones. (Honeyflow x (No. 46-16: Prairie Sunset x Tobacco Road)) Highly Commended 1949. Early mid-season. 36".
- VANDA** (Miles 1946) **\$3.50**
This is a lovely blue, originated in England and a sister plant to Elizabeth of England. Mid-season. 36". (Lagoon x Typhoon)
- VANDABETH** (Miles 1952) **\$9.00**
This hybridizer has given us some very fine iris, such as Elizabeth of England. A flower of rare perfection, in a pale blue smoothly overlaid with heliotrope that gradually deepens at the heart of the flower, harmonizing with a deep yellow beard. The flowers with conic standards and flaring falls slightly ruffled, have that rare heavy quality that withstands adverse weather conditions. 36". (Vanda x Elizabeth of England)
- VANITY FAIR** (D. Hall 1951) **\$7.50**
This is a very late blooming clear, true medium pink. Very smooth and beautifully tailored in form, with a fiery tangerine beard. Delicate and lovely. 36". (Cherie x Fantasy) Honorable Mention 1952.
- VEILED IN MYSTERY** (Milliken 1951) **\$7.50**
This is a jewel of antique satin-white with a dusting of pale char-treuse blended together. It makes a picture of rare beauty, due to the dainty fluting and ruffling of the standards and falls. A full violet beard. Truly outstanding. Midseason. 40".
- VELVET DUSK** (Schreiner 1948) **\$1.50**
A variety coming from the same line as Sable, this dark, glistening blue-black is full, well-flared and rounded. Even the beard is a bluish brown. Mid-late. 36".
- VICTORIAN VEIL** (T. Craig 1950) **\$4.00**
This is one of Tom's "Fancies." Huge blossoms of snow-white ground color, very heavily sprayed with rose-violet, giving a slightly bi-tone effect. The broad petals are beautifully ruffled. Its well branched, tall stalks will be a crowd-stopper. 44". ((Advance Guard x Mitchell's No. 2-21) x Sister to Joseph's Mantle)
- VIOLET HARMONY** (Lowry 1952) **\$10.00**
At the American Iris Society Convention in 1953 Violet Harmony was, without doubt, the most popular iris, resulting in winning the President's Cup. It is a lovely shade of violet with a light area on the falls beneath the beard. The form is exquisite with ideal ruffling and spacing of flowers on the stems. A high-class iris. (Snow Flurry x Cloud Castle) Honorable Mention 1952. Award of Merit 1954. Mid-season. 38".
- VISTA VERONICA** (Buss 1950) **\$1.75**
Harmonious in orchid-blue tones called "Veronica" by the dictionary of color. The flowers are large with broadly rounded petals slightly ruffled. The entire flower has a finely lacinated edge and is slightly crepy in appearance because of a myriad network of subdued veining on the lighter ground. Mid-season. 46".
- VIVEZA** (White 1954) **\$12.00**
An uncommon combination of some oncocyclis blood in a variegata. Blended maize and straw-yellow standards and mahogany-red falls with an orange beard. Early mid-season. 38".
- WEIRDIE** (Craig 1949) **\$1.50**
A sister to Rich Raiment. An unusual blend of buff with silver overcast and all-over markings of rose. Different. Midseason. 36".
- WELCOME GUEST** (Linse 1952) **\$10.00**
Glowing amber-gold with the center of the flower yellow-gold. Attractively crimped and waved, horizontally flaring falls. 38". (Treva x Tobacco Road)
- WHISPERS** (Linse 1951) **\$4.00**
Ruffled, soft chrome-yellow standards and amber-white gracefully flaring falls. The reverse of Pinnacle. The flowers are larger and broader, yet possessing that delicate quality of loveliness. 42". Honorable Mention 1952.

WHITE PEACOCK (Pattison 1952) \$10.00

A superb creation in softly alluring blue-white ruffled flowers of smooth finish. Large, broad petals of an exceptionally heavy substance, such as seldom seen in an iris. The 40" stalks are very well branched. One of the very top rating new iris. (Katharine Fay x Lady Boscawen) Honorable Mention 1952.

WHITE RUFFLES (C. Taylor 1947) \$2.50

An iris must be super to attract the attention of every visitor in a garden. This is what White Ruffles does here at Irisland. It is a large, beautifully ruffled, warm white flower with broad falls of excellent substance. Tall, well-branched stalks. This is one of the most outstanding whites today. Blooms late mid-season. 38". (Snow Flurry x Princess of Brentwood) Honorable Mention 1947.

WHITE SMOKE (C. Rees 1950) \$1.50

A large ruffled blue-white with a blue-smoke cast. Heavy substance and fine carriage. Late. 42". (Snow Flurry x Big Dipper)

WINDSOR (Tompkins 1950) \$7.50

A deep blue with faint violet tinge, this large iris is noted for broad flaring falls and domed standards. Heavy substance and satiny finish. Mid-late. 40". (Brunhilde x Great Lakes) Honorable Mention 1950.

WOODMONT PLUME (Mitchell-LaFrenz '54) \$5.00

This is definitely a new plicata of outstanding character and parentage. Standards are a stippled red-violet and the rounded falls are widely spread and heavily edged with the same red violet. The ground color white. Reports are that it is proving to be a good breeder. 37". (Mitchell Sdlg. x Salbach Sdlg.)

YARKAND (White 1948) \$1.00

One of the richest oncobreds available to normal gardens, with blended and varied shades of rich violet, very dark, and almost black beard above a signal patch. Winter hardy, and strongly oncocyclis in form. 32".

YELLOW ORGANDY (Rees 1952) \$6.00

This bears the strain of Snow Flurry, one of the most popular irises of all time. Crisp and starched organdy, it has pale yellow green-tinged blossoms that are so heavily ruffled as to appear almost shirred below the haft. The tall stalks with 4-way branching carry 12 6-inch buds. Late. 42". (April Tan: (Snow Flurry x Happy Days) x Ming Yellow)

ZANTHA (Fay 1947) \$2.00

A large, very deep yellow of good form, substance and heavy texture. A very popular iris, which is good gauge of its worth. Early mid-season. 36". Award of Merit 1952.

ZEPHRINE (Corey 1954) \$5.00

Very white blooms of large size and somewhat ruffled form. A pleasing sight in the garden. (Bay State x Cloud Castle) 34".

WHITE'S "LITTLE ONCOS"

Offered here are the hardest of White's Onco hybrids—varieties that have endeared themselves because of their strong Onco characteristics. Withhold summer water, give them good drainage and watch them perform.

- Mustapha**—Lavender-gray standards, maroon falls. \$.60
- Nelson of Hilly**—White, cinnamon and violet. . . . 1.00
- Oyez**—Off-white heavily veined brickish red. . . . 1.00
- Susan of Hilly**—Amethyst; falls yellow and violet. . . 1.00
- Some Love**—Ivory white, pink and cinnamon. . . . 1.00

One each of **5 varieties**
(value \$4.60) for just **\$3.00**

DWARF BEARDED IRIS

Dwarf Iris are miniature in size, ranging from six to twelve inches in height. Their blooming season starts in February. Some varieties bloom several times a season on established clumps. The rhizomes are small. They are ideal as rockery specimens, and adorable for border planting.

PLANTING CARE is the same as for Tall Bearded Iris.

ATROVIOLACEA (Todaro 1857) 50c

A true pumila of deep red-violet, and the first to bloom. Height 5". Caparne Award 1952.

BEAUTY SPOT (Marx 1947) \$1.00

An oncobred with large flowers of unique form, resembling the regelia species, in an attractive plum-purple color. Honorable Mention 1949. Caparne Award 1953. Height 8".

BLUE FLASH (Marsh 1947) 60c

Daintily tinted light flax blue. Early bloomer. Height 5".

CYANEA (G. & K. 1899) 50c

A rich crimson-purple with a touch of white in the heart of the flower. Height 6". A free flowering variety.

DAPPERLING (1944) 50c

A soft light yellow free blooming variety. Height 7".

FAIRY FLAX (P. Cook 1951) \$1.50

A light blue with flaring form. Height 10".

INK SPOT (Marx 1951) 60c

Bright blue-black toned blooms. Plant this one with yellows. Height 6".

LADDIE BOY (Sass 1931) 50c

A fine clear deep blue of smooth texture. Height 10".

LITTLE GIANT 60c

Large flowered red-purple with a white beard. Very good.

DON'T BE CONTENT WITH BEARDED IRIS ALONE!

LOUISE STARKER 50c

A good clear pure white of outstanding quality. Height 10".

MAROCAIN (Milliken 1914) 50c

Rich deep velvety blackish-purple. A superior iris. Height 10".

MOON GLEAM (Marx 1947) 60c

The finest light near sulphur yellow with semi-flaring falls. Height 5".

ORANGE QUEEN (Barr 1910) 50c

A deep orange-yellow self. Fragrant. Height 7".

PATH OF GOLD (Hodg. 1943) 50c

A delightfully pleasing shade of clear deep yellow. Height 8". Honorable Mention 1951.

PESHAWAR (Schreiner 1937) 50c

Unique in its color blending of brown and red-purple. An oncobred. Height 10".

SNOW MAIDEN (Chadwick 1953) 50c

Ruffled white. Flowers of nice size; a free flowering variety. Height 12".

SOCRATES 50c

Medium tones of red-purple blended together. Height 6".

SOUND MONEY (Sass 1934) 50c

This is a very fine rich golden yellow self. Caparne Award 1950. Height 5".

TANTALIZER (Marx 1952) \$1.00

A Regeliocyclis of buff-yellow with maroon purple markings. Height 10".

YELLOW FRILLS (Hill 1937) 60c

Large ruffled deep yellow with flaring falls of excellent substance. Height 10".

Our Hall of Fame

THE STANDARD BEARDED IRIS VARIETIES

On this page we have listed a group of iris no longer new to gardens, but they are varieties that continue to be very popular just because they are so good they compete strongly with the new kinds. Where, for instance, is an iris that surpasses Wabash in its wonderful color combinations? We have discarded many varieties through the years as being supplanted by better ones in the same color class, but we just can't drop these. Here's your chance, then, to buy excellent iris at very low prices. They are the ones which have stood the test of time in countless gardens.

25% DISCOUNT on Orders
of \$5.00 or More

Make Your Own Collection
from Items on This Page Only

33 $\frac{1}{3}$ % DISCOUNT on Orders
of \$7.50 or More

ALADDIN'S WISH —Blue, brushed white. 36".....	\$.75	LIGHTHOUSE —Bright flame old-rose. 36".....	.60
ALDURA —Huge white, stitched blue. 36".....	1.00	LOUVOIS —Rich brown-maroon bi-color. 33".....	.60
AMIGO —Lavender and pansy amoena. 30".....	.60	LOVE AFFAIR —White, stippled rose-pink. 37".....	.75
ARAB CHIEF —Brilliant burnt-orange. 32".....	.75	MARQUITA —Cream veined watermelon. Different. 36".....	.60
ATROUS —Deep red of medium size. Late. 34".....	.75	MARY VERNON —Old gold and chianti-ruby. Very nice..	.75
AUBURN —Rich deep coppery-brown. 36".....	1.00	MEXICO —Golden-buff and red-brown bicolor. 35".....	1.00
AUTUMN FLAME —Brilliant red. Fall bloomer. 34".....	.75	MINNIE COLQUITT —Purple banded plicata. 36".....	1.00
AZALEA —Azalea pink with ivory flush. 36".....	1.00	MISTY GOLD —Lemon toned, edged gold. 36".....	.75
AZTEC COPPER —Smoky-violet, copper. 35".....	.60	MOONLIGHT MADONNA —Lemon ice and white. 36".....	.75
BLACK AND GOLD —Variegata. Chrome and maroon. 38".....	.75	MULBERRY ROSE —Mulberry-rose. 40".....	.75
BLACK BANNER —Velvet midnight black. 36".....	1.00	NIGHTFALL —Blackish pansy-purple. 36".....	.60
BLUE GLOW —Deep rich blue. 35".....	.75	OLA KALA —Of deepest orange yellow. 36".....	1.00
BLUE RHYTHM —Cornflower blue. Dykes winner.....	1.00	OLD ROSE —Lovely old rose. 36".....	.60
BLUE SHIMMER —White, stippled blue. 36".....	.75	ORCHID LADY —Lilac-pink and copper. 36".....	.60
BROWN STAIN —Blendings of brown shadings. 36".....	1.00	ORMOHR —Pale lilac pogocyclus. 35".....	.60
BRYCE CANYON —Warm henna-copper beauty. 36".....	1.00	PAINTED DESERT —Desert color blend. 40".....	.75
CALIFORNIA ROSE —Pinkish old rose. 36".....	1.50	PATRICE —White, stitched rose-brown. 36".....	.60
CASA MORENA —Burnt sienna and chestnut. 38".....	1.00	PERSUASION —Classic powder-blue. 38".....	.60
CHIEF POKING FIRE —Oxblood red, very bright. 35".....	.75	PINK LACE —Rosalane-pink. 36".....	1.00
CHINA MAID —Soft lilac-pink. 38".....	.75	PRINCESS OF BRENTWOOD —Tall pink blend. 40".....	.75
CLOTH OF GOLD —Smooth deep yellow. 36".....	.75	PURPLE MOOR —Huge, rich glossy purple. 35".....	1.00
CLOUD CASTLE —Ruffled wisteria blue. 36".....	1.00	RAJAH BROOKE —Topaz and pigeon-blood red. 36".....	.60
CORDOVAN —Deep coppery oxblood-red. 36".....	1.00	RED AMBER —Jasper pink and eugenia red. 40".....	.75
DAFFY —White plicata Zebra striped maroon. 35".....	1.25	RED TORCH —Gold-buff and red variegata. 34".....	.75
DEEP VELVET —Deep red-violet. Lovely. 36".....	.65	RED VALOR —Splendid garnet-red. 36".....	.75
DUET —Honey-beige and pleroma violet. 40".....	.60	ROSE TOP —Rose pink feathered plicata. 34".....	1.00
EASTER BONNET —Rhodenite pink. Large blooms. 36".....	.75	SABLE —A lustrous black-violet. 35".....	.75
ELLA CALLIS —Yellow, flushed orange. Different.....	.75	SALAMONIE —Well formed peach-pink blend. 38".....	1.00
ELMOHR —Mulberry pogocyclus. Huge blooms. Dykes.....	1.00	SEA LARK —Slate-blue with purple flush. 36".....	1.00
ESQUIRE —Deep blue-purple. Smooth finish. 40".....	1.00	SHANNOPIN —Cream and pink amoena. 36".....	.75
EXTRAVAGANZA —Cream and copper-red-violet. Late.....	1.00	SNOW CARNIVAL —Large ruffled snow white. 36".....	1.00
FERNANDO —Deep rose-purple. Late. 38".....	.60	SNOW FLURRY —Large ruffled blue-white. 44".....	1.00
FRANCELIA —Deep chrome-yellow. 34".....	.75	SOLID MAHOGANY —Smooth deep garnet red. 35".....	1.00
GALE STORM —Grand medium lavender-blue. 36".....	.75	SPINDRIFT —Popular coral pink. 35".....	.75
GALLANT LEADER —Good large bright red. 36".....	.75	ST. REGIS —Ice-blue-white. 38".....	.75
GARDEN FLAME —Bright garnet-rose-red. 33".....	.75	SUEZ —Oncobred, brushed violet and white. 34".....	1.00
GAY SENORITA —Yellow with brown veins. 36".....	1.00	SULTAN'S ROBE —Rose, copper and blue blend. 35".....	1.00
GIRDLIAN'S CHOICE —Bright petunia-violet. 38".....	.60	TEA ROSE —Lovely rose blend. 36".....	.75
GOLDEN EAGLE —Large brilliant yellow. 36".....	.60	THREE CHEERS —Amoena-blue-white and purple. 35".....	.75
GOLDEN MAJESTY —Late deep yellow. 36".....	.60	TIFFANJA —Buff and brown plicata. 35".....	.60
GOOD SON —A two-toned red-brown. 36".....	.60	TIFFANY —Yellow and rose plicata. 35".....	.60
GRACE MOHR —Huge oncobred violet. 37".....	.75	TOURNAMENT —Luminous purplish-rose. 42".....	1.00
GREAT LAKES —Clear medium light blue. 36".....	.75	TOURNAMENT QUEEN —A fall blooming fuchsia. 36".....	1.50
GULF STREAM —Grand midnight blue self. 36".....	1.00	TREASURE ISLAND —Popular pure smooth yellow. 36".....	.60
GYPSY —Yellow and chestnut variegata. 34".....	.60	UKIAH —Blendings of deep brown-reds. 40".....	.60
HIGH COMMAND —Variegata of yellow and red. 35".....	1.00	VATICAN PURPLE —Rich deep blue-purple. 38".....	1.00
IVORY TOWER —Lovely smooth banana cream. 38".....	.75	VICE REGAL —Smooth bronze red-purple. 36".....	.75
JASMINE —Smooth clear golden yellow. 36".....	.75	WABASH —White and violet amoena. 36".....	.60
JULIET —Flame-copper, shaded salmon. 32".....	1.00	WILLIAM A. SETCHELL —Huge; shadings of purple. 36".....	.75
LADY BOSCAWEN —Exquisitely ruffled pure white.....	1.00	WM. MOHR —Pogocyclus with violet veining. 34".....	.60
LADY MOHR —Oncobred. Oyster and chartreuse. 36".....	1.00	WINTER CARNIVAL —Sedate snow white. 38".....	.75
LAKE BREEZE —Ruffled good medium blue. 35".....	.75	YOUR WORSHIP —Delectable red-brown self. 38".....	1.00

California-Grown Iris Are Best

It is not excessive loyalty to the State of California that leads us to say California-grown iris are the best—it is just a matter of length of growing season and controlled moisture. Plants that grow 12 months of the year just have to be bigger and more vigorous, and rhizomes matured through withholding water are more free of disease and ready to transplant. Of course, California-grown rhizomes are perfectly hardy everywhere.



TRULY YOURS



CAMPFIRE GLOW



CHERIE



BLUMOHR

DON'T BE CONTENT WITH BEARDED IRIS ALONE!

Pacific Coast Hybrid Iris

These are California and Oregon natives and thrive in almost any location in the garden with the average amount of care and watering. However, we advise some sun. Greatly admired in a garden cluster. They are grand plants for the perennial border, and do not require resetting for several years. Ideal as cut flowers for arrangements.

These little beauties start blooming out here in California about mid-March and bloom intermittently well into June. Plants are evergreen.

The only time these plants can be divided is in the middle of the winter, while dormant. We will ship established divisions from November 1st to early March (damp packed). Where extremely cold winters prevail, March shipments are preferable, unless protection is given, until the plants are well established.

IMMEDIATE PLANTING IS NECESSARY, as they don't like to have their roots exposed to air. Keep them well watered until established, thereafter moderate watering is sufficient.

AVAILABLE AT THE GARDEN IN POTS.

AMIGUITA (Nies 1951) \$2.00

A Douglasiana. Light violet standards with deep royal purple veins through the center of the ruffled standards. The center of the falls are deep royal purple which is carried to the outer edges through the veinings. Pleasing in size, form and texture. 16". A "must have." Highly Commended 1949. Honorable Mention 1951.

BLUE SAGE (Nies 1947) \$1.50

Sage blue with an ethereal pink glow cast over the entire bloom. A heavy bloomer with exceptional branching. An outstanding Douglasiana. 18" to 24".

MORNING FAIRY (Luhren 1953) \$2.25

Almost a white Douglasiana. The petals are white, with dainty cobalt violet veining and a buttercup yellow signal stripe in the center of the fall petals. Lovely large flowers are carried on 12" to 15" stalks. Honorable Mention 1953.

ORCHID SPRITE (Nies 1943) \$1.50

Masses of pinkish-orchid flowers of beautiful form on 15" stems. There is nothing like this exquisite little beauty. Award of Merit 1948. Pictured on this page.

PACIFIC GLEAM (Luhren 1955) \$3.00

See our introductions on page 4.

PACIFIC ROSE (Luhren 1955) \$3.00

See our introductions on page 4.



SANTA ANA—Innominata



ORCHID SPRITE—Douglasiana

PACIFIC STARTLER (Lyon 1955) \$2.00

See our introductions on page 4.

PRIDE OF CALIFORNIA (Luhren 1955) \$4.00

See our introductions on page 4.

SANTA ANA (Dr. Lenz) \$1.50

Low growing, vigorous plants with 8" to 10" branched stalks carrying up to 6 flowers. Dark green, narrow, grass-like leaves. Standards are buttercup yellow, and falls are buttercup to Indian yellow with saffron yellow signal patch. An Innominata, blooming from March to late July. Honorable Mention 1953.

SANTA ANITA (Dr. Lenz 1954) \$2.50

An Innominata, Santa Anita offers a perfect choice for rockery planting, bordering or low accents. The effect of the flower is very rich indeed—like molten gold splashed on the purple velvet. The predominating color is the purple, made even more vivid by the contrast. To be exact, for purposes of strict color record, fall petals are Imperial purple (33/1 to 33) blending to a deep Dodge purple toward the end of the petals (732), with center signals Saffron yellow (7). Standards and styles are Imperial purple (33/1). It blooms from early spring into the summer. Height 6". Honorable Mention 1954.

SANTA PAULA (Dr. Lenz 1954) \$2.00

Dr. Lenz's work at the Santa Ana Garden reaches high pitch in this accompanying innominata. The same can be said for it as for Santa Anita in relation to uses and attractiveness. The appearance and composition of Santa Paula is reminiscent of an old fashioned nosegay. The flower is light Indian yellow (6/3). The center of the falls is brushed with deepest Indian yellow (6); and the standards continue this pleasing theme with a tiny vein of the deep Indian yellow at the base (6/2). They are broad, ruffled and rounded in form. Height 6". Honorable Mention 1954.

SPRING FLIRT (Luhren 1955) \$3.00

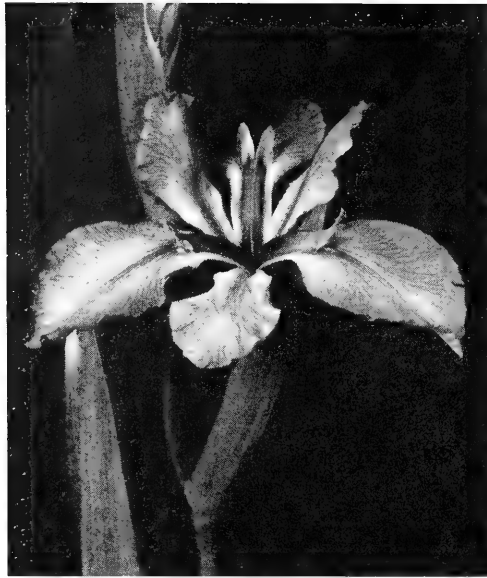
See our introductions on page 4.

LYONS IRISLAND OFFERS MANY SPECIES OF IRIS

COLOR CHART OF TALL BEARDED IRIS

<p>WHITE</p> <p>Cascadian \$ 7.50 Clara B 7.50 Glistenglow 1.00 Greenglow 1.00 Green Whisper 2.00 High Seas 8.00 Lady Boscawen 1.00 New Snow 1.50 One Clear Call 7.00 Purissamohr 10.00 Senorita Isla 12.50 Snow Carnival 1.00 Snow Flurry 1.00 Spanish Peaks 2.00 Tranquility 5.00 Two Snows 8.00 Veiled in Mystery 7.50 White Peacock 10.00 White Ruffles 2.50 White Smoke 1.50 Winter Carnival .75 Zephyrine 5.00</p> <p>CREAM</p> <p>Amandine 1.50 Desert Song 1.00 Ivory Petals 3.50 Ivory Tower .75 Leading Lady 2.50 Moonlight Serenade 6.00 Ruffled Bouquet 3.00 Ruffled Organdy 10.00 Star Shine 4.00 Utah Cream 15.00</p> <p>WHITE PLICATA</p> <p>Aladdin's Wish .75 Aldura 1.00 Aunt Amoret 5.00 Bird Song 3.00 Blue Rim 2.00 Blue Shimmer .75 Burgundy Splash 5.00 Caroline Jane 9.00 Cinnamon Toast 17.50 Daffy 1.25 Engraved 7.50 Fairy Fancy 5.00 Frosty 5.00 Gay Border 1.50 Gene Wild 12.50 Happy Meeting 25.00 Highland Fling 5.00 King's Jester 1.50 Love Affair .75 Lovelace 2.00 Masked Ball 1.75 Master Neil 5.00 Minnie Colquitt 1.00 New Hope 3.00 Patrice .60 Pink Accent 7.50 Port Wine 7.50 Raspberry Ribbon 7.50 Rich Raiment 3.50 Rose Top 1.00 Victorian Veil 4.00 Woodmont Plume 5.00</p> <p>YELLOW PLICATA</p> <p>Captain from Castile 3.50 Custard 1.50 Dawn Reflection 3.00 Fancy Feather 5.00 Firecracker 1.00 Gala Finale 3.50 Honor Bright 3.50 Rodeo 1.50 Tabasco 6.00 Tiffanja .60 Tiffany .60</p> <p>YELLOW AND WHITE</p> <p>Clear Sailing 3.50 Golden Shadows 5.50 Lady Louise 2.00 Misty Gold .75 Montecito 4.50 Moonlight Madonna .75 Mystic Melody 5.00 Pinnacle 2.50 Prospector 2.50 Song of Songs 1.50 Spring Romance 3.50 Summit 5.00 Surrender 7.00 Tranquil Moon 2.00 Truly Yours 10.00 Whispers 4.00</p>	<p>CHARTREUSE</p> <p>Char-Maize 5.00 Green Mohr 3.50 Green Pastures 1.25 Lady Mohr 1.00 Limelight 7.50</p> <p>LIGHT YELLOW</p> <p>Fort Knox \$.75 Moonlight Sonata 1.50 Sunray 2.00 Yellow Organdy 6.00</p> <p>MEDIUM YELLOW</p> <p>Golden Eagle .60 Golden Ruffles 1.50 Gold Ruffles 1.50 Gold Smoke 7.50 Jasmine .75 Real Gold 8.00 Ruth 2.00 Sarah Lester 4.00 Spring Melody 15.00 The Knockout 3.50 Tindalao 4.50 Treasure Island .60</p> <p>DEEP YELLOW</p> <p>Arcadia Buttercup 1.50 Cloth of Gold .75 Court Herald 3.00 Ella Callis .75 Empress Eugenie 5.00 Francelia .75 Gay Senorita 1.00 Golden Majesty .60 Golden Shell 12.00 Gold Sovereign 2.00 Marjie 2.50 Ola Kala 1.00 Solid Gold 10.00 Summer Sun 3.50 Temple Bells 10.00 Zantha 2.00</p> <p>TANS AND AMBER BLENDS</p> <p>Brilliant Amber 1.00 Cascade Splendor 1.50 Chamois 1.50 Ginger 6.00 Golden Plover 5.00 Golden Russet 2.00 Maxwellton 3.00 Mellowglow 1.50 Mohresque 2.00 Mohr Majesty 7.50 Thotmes III 7.50 Welcome Guest 10.00</p> <p>ORANGE & BURNT ORANGE</p> <p>Arab Chief .75 Banner Bright 15.00 Coronation Gold 8.50 Inca Chief 10.00 June Sunlight 10.00 Mayan Gold 5.00 Orange Creamo 15.00 Rocket 1.00</p> <p>BRONZE AND COPPER</p> <p>Aztec Copper .60 Brown Stain 1.00 Cairo 6.00 Copper Medallion 4.00 Glistening Copper 12.00 Painted Desert .75 Prairie Sunset 1.00 Russet Wings 1.00 Susitna Sunset 1.00</p> <p>HENNA</p> <p>Auburn 1.00 Bryce Canyon 1.00 Casa Morena 1.00 Cordovan 1.00 Juliet 1.00 Lockwood 1.50 Melodist 1.25 Molten 4.00 Sunset Blaze 2.00</p> <p>BROWN</p> <p>Al Borak 9.00 Argus Pheasant 2.50 Dark Chocolate 25.00 El Paso 1.50 Good News 1.50 Good Son .60 Gypsy Classic 5.00 Pretty Quadroon 5.00 Rio Valley 12.50 Tobacco Road 1.50 Your Worship 1.00</p>	<p>FLESH AND PEACH PINK</p> <p>Conventoin Queen 25.00 New Horizon 1.00 Pink Matron 1.50 Premier Peach 1.00 Princess of Brentwood .75 Rosa Barone 6.00 Salamonie 1.00 Vanity Fair 7.50 Wide Awake 10.00</p> <p>APRICOT</p> <p>Apricot Glory 8.00 Apricot Supreme 5.00 Ballet Dancer 1.50 Constant Comment 12.00 Hi-Time 1.50 Melody Lane 3.50 Top Flight 7.50</p> <p>SALMON & FLAMINGO PINK</p> <p>Anthea 10.00 Azalea 1.00 Ballerina 1.50 Carabella 1.50 Cathedral Bells 10.00 Cherie 3.50 Cloudcap 6.00 Color Carnival 2.50 Courtier 1.00 Dolly Varden 7.50 Flamingo Bay 15.00 Happy Birthday 8.00 Heritage 3.50 Hit Parade 1.00 June Meredith 30.00 Lotte Lembrich 7.50 Love Story 3.50 May Hall 25.00 Memories 20.00 Paradise Pink 5.00 Party Dress 6.00 Pink Cameo 1.00 Pink Confection 6.00 Pink Enchantment 35.00 Pink Formal 4.00 Pink Fulfillment 35.00 Pink Lace 1.00 Pink Sensation 5.00 Spindrift .75 Twilight Sky 1.50</p> <p>ROSE AND BLENDED PINK</p> <p>Alline Rogers 2.50 California Rose 1.50 China Maid .75 Easter Bonnet .75 Maytime 9.00 Pagan Princess 2.00 Pathfinder 3.50 Queen's Taste 8.00 Shannopin .75 Syllabub 4.50</p> <p>ROSE</p> <p>Centennial Queen 15.00 Inspiration 1.00 Mary Randall 15.00 Old Rose .60 Red Amber .75 Red Majesty 1.50 Tea Rose .75 Tournament 1.00 Tournament Queen 1.50</p> <p>FLAME AND ROSE RED</p> <p>Autumn Flame .75 Big Time 9.00 Campfire Glow 2.00 Chief Poking Fire 7.50 Defiance 35.00 Gallant Leader .75 Garden Flame .75 Lighthouse .60 Pacemaker 3.00 Rosabella 3.00 Ruffled Apache 15.00 Spellbound 6.00</p> <p>GARNET AND BROWN-RED</p> <p>Ali Baba 7.50 Big Ute 25.00 Gallant Knight 10.00 Garnet Glow 6.00 Louvois .60 Orelio 1.00 Pequot 5.00 Quechee 4.00 Rajah Brooke .60 Red Valor .75 Redwyne 1.50 Relentless 1.00 Technicolor 5.00</p>	<p>CRIMSON & MAROON-RED</p> <p>Atrous \$.75 Deep Maroon 10.00 Garden Glory 1.00 Great Day 20.00 Majorette 14.00 Mary Vernon .75 Ranger 1.00 Solid Mahogany 1.00 The Mad Hatter 7.50 Ukiah .60</p> <p>VARIEGATA (Yellow & Red)</p> <p>Black & Gold .75 Bold Contrast 15.00 Duet .60 Gypsy .60 High Command 1.00 Mexico 1.00 Pretender 10.00 Red Torch .75 Royal Wish 4.50 Staten Island 3.00 Top Score 1.00 Viveza 12.00</p> <p>BLENDS</p> <p>Colorcade 5.00 Colorglo 7.50 Color Harmony 10.00 Damascus Blade 9.00 Desert Twilight 10.00 Flamboyance 5.00 Gypsy Rose 1.00 Oriental Glory 7.50 Prairie Jewel 20.00 Rainbow Room 2.00 Rare Pearl 10.00 Rilla Gabbert 1.50 Savage 5.00 Stormy Skies 10.00 Sultan's Robe 1.00 Trail Blazer 4.50 Twenty Grand 9.00 Utah Sunset 5.00</p> <p>LIGHT BLUE</p> <p>Alicia 2.00 Bay State 1.00 Blue Angel Wings 1.00 Blue Sapphire 7.50 Bluing 3.00 Blumohr 5.00 Cerulean 6.00 Chinook Pass 1.50 Cloud Castle 1.00 Elizabeth of England 2.00 Gracious Lady 3.00 Helen McGregor 1.50 Hurricane 3.00 Lake Breeze .75 Mary Valentine 15.00 Night Moth 5.00 Rehobeth 25.00 So Sweet 5.00 St. Regis .75</p> <p>MEDIUM BLUE</p> <p>Azure Lake 8.00 Blue Blazes 4.00 Blue Rhythm 1.00 Blue Valley 1.00 Chakokia 3.00 Chivalry 1.00 Columbia 12.00 Consolation 3.00 Great Lakes 20.00 High Tor 3.00 Jane Phillips 3.00 Laddie 4.00 Lady Ilse 10.00 Morning Blue 2.00 Persuasion .60 Pierre Menard 2.50 Seafarer 5.00 Sierra Skies 18.00 Sky Ranger 1.00 Vanda 3.50</p> <p>DARK BLUE</p> <p>Arabi Pasha 10.00 Blue Glow .75 Esquire 1.00 Gale Storm .75 Gulf Stream 1.00 Illustrious 5.00 Lady Dozier 10.00 Sea Lark 1.00 Vandabath 9.00 Windsor 7.50</p>	<p>NOVELTIES</p> <p>Butterfly Wings \$ 1.50 Conquest 7.50 Frances Kent 7.50 Golden Symphony 2.00 Jallah Efendi 9.00 Lady Albright 5.00 Marquita .60 Palomino 12.00 Pinafore Lass 5.00 Ripples 3.50 Suez 1.00 Weirdie 1.50 Yarkand 1.00</p> <p>ORCHID PINK AND ORCHID</p> <p>Arlene Wood 3.50 Chantilly 1.00 Fantasy 3.50 Far Hills 1.00 Fuchsia 5.00 Heather Rose 2.50 Lavanisque 12.00 Lynn Langford 1.50 Orchid Lady .60 Pink Bountiful 2.00 Pink Plume 3.00 Sweet Marie 3.00</p> <p>LAVENDER, LILAC, MAUVE</p> <p>Anatolia 3.00 Dancing Deb 5.00 Frances Craig 10.00 Grace Mohr .75 Lilac Lane 2.50 Orchid Ruffles 10.00 Ormohr .60 Vista Veronica 1.75</p> <p>LIGHT RED-PURPLE</p> <p>Elmohr 1.00 Fernando .60 Girildian's Choice .60 Mulberry Rose .75</p> <p>DARK RED-PURPLE</p> <p>Cardinal's Robe 2.50 Envoys 3.00 Nightfall .60 Plum Pretty 2.50 Sable .75 Sable Night 15.00 Vice Regai .75</p> <p>VIOLET</p> <p>Deep Velvet .65 Evensong 2.50 Flurry Mohr 1.50 Heigho 3.00 Mohr Affair 5.00 Mohr and More 10.00 Peg Dabagh 1.00 Violet Harmony 10.00 William A. Setchell .75 Wm. Mohr .60</p> <p>DEEP BLUE-PURPLE</p> <p>Black Banner 1.00 Black Forest 1.00 Black Hills 7.50 Concord Velvet 4.00 Kaliffa Fatima 5.00 Kol Nidre 15.00 Midnight Blue 8.00 Night Life 3.00 Northwestern 10.00 Purple Moor 1.00 Raven Wing 4.50 Vatican Purple 1.00 Ve'et Dusk 1.50</p> <p>AMOENA AND NEGLECTA</p> <p>Amigo .60 Bright Hour 9.00 Chiquita 5.00 Extravaganza 1.00 Gaylord 10.00 Helen Collingwood 7.50 Lothario 1.00 Mardi Gras 12.00 Mount McKinley 1.00 Three Cheers .75 Wabash .60</p>
---	---	--	---	---

DON'T BE CONTENT WITH BEARDED IRIS ALONE!



CAROLINE DORMON

This beardless variety has a most graceful, carefree air, challenging us to give it a try. Originating in the Louisiana swamps, they adapt themselves beautifully to our garden environment. Where it might be too shady for the other Iris species, plant Louisianas.

CULTURE—Plant late in summer, or early in fall.

In preparing your iris beds, incorporate a generous amount of compost and well rotted steer, or other organic fertilizer. Louisianas give best performance in enriched soil. Set plants about two feet apart, where different varieties are used. Shallow planting is best (rhizomes just covered). Keep the ground mulched with leaf mold, compost, or steer fertilizer, and well watered while in the growing stages, especially until they have established themselves, then again in early spring during pre-blooming seasonal growth.

ACCENTS DARK \$2.75
Huge *giganticaerulea* type flaring form flowers in rich warm purple of smooth texture on tall stalks. Accents Dark attracts attention. 38".

BAYOU SUNSET (MacMillan 1945) \$2.00
This striking and most unusual iris is sure to elicit attention. The large flowers are deep rose, containing just a suggestion of lavender. The signal patch, radiating out almost to the edge of the broad orbicular petals, is white, cream and gold, creating a veritable sun-burst of color. 40".

BON ROGUE (DeBaillon-Dormon 1942) \$1.50
(Collected wild by DeBaillon in 1932) Found near Paradi. This "good brownish-red" has flat, wide-spreading, 6" flowers borne on 30" stems. Tends to form a more compact clump than some of the Louisiana group, making it an excellent garden subject.

CANDLES (Caroline Dormon 1951) \$1.75
Floriferous and showy 5½" flowers with very broad segments, amaranth-red in color, with picric-yellow style arms, and bright yellow signal. 24" stalks.

CAROLINE DORMON (Ruth Dormon 1943) \$1.50
An iris that is "different." The heart of both the sepals and petals are of pale yellow, melting into soft rose-red towards the edges which flare upward. It has charm and distinction.

EASTER BASKET (C. Dormon 1953) \$1.25
Colorful as a basket brimming with Easter Eggs. A bright, vivid, rose-red. Large flaring flowers of graceful carriage. 36".

ELEPHANTINA (Small 1931) \$1.00
Large flaring ivory-white, with a yellow signal patch, of good heavy substance and pleasing flat-flare form. 36". Reliable bloomer.

FORSYTHIA (C. Dormon 1946) \$2.00
A chamois-buff of Abbeville type. Exceptionally large flowers with broad graceful sepals. Petals of heavy substance. 36".

Louisiana Iris

GOLDEN FAIRY (Nies 1946) \$1.25
A lovely medium to dark toned yellow of free blooming habit on graceful wiry stems. Flowers medium size. Midseason. 40".

GREEN LUSTRE (Eric Nies 1951) \$1.50
Lovely and lustrous flowers with flaring form. The standards and style arms are light uranium green. The falls are light uranium green with a soft dresden yellow influence. The signal stripe on the falls is of deep buttercup yellow surrounded by a flush of blue. 34".

JEUNE FILLE (DeBaillon-Dormon 1942) \$1.00
Delicate and lovely large *giganticaerulea* formed white flowers with a yellow crest. 40".

KRAEMER YELLOW (Kraemer 1943) \$2.00
A rare shade of sulphur yellow with green style arms. This is a collected natural hybrid of *Giganticaerulea* flaring form. Mid-season. 30".

MALLARD WING (Nies 1946) \$1.50
An outstanding large medium grey-blue *Giganticaerulea* form flower of good heavy substance, with a blending of dark purple in the center of the sepals. Unique and striking. 40".

MARY S. DeBAILLON (DeBaillon-Dormon) \$1.00
1948 DeBaillon Award Louisiana Iris. They are like tremendous orchids. Petals are orchid-pink, sepals of lavender-rose. These lovely 7" flowers are set off by a broad yellow crest. 36".

NEW ORLEANS (DeBaillon-Dormon 1942) \$1.50
Graceful and lovely large rose-pink flowers of great beauty. Plant this with pale blues, creams and soft yellows. 30".

PINK CAPRICE (DuBose 1955) \$5.00
See introductions on page 4.

ROYAL GEM (S. Smith 1950) \$3.50
Broad overlapping floral segments, which have a delightful flare. Intense red-violet, with a triangular signal patch of bright gold on the sepals. Texture is like velvet. Awarded the President's Cup 1951.

RUTH MARSALIS (DeBaillon-Dormon 1943) \$1.00
This is a natural hybrid from the famous DeBaillon collection. Its large flowers with graceful flare in blues will intrigue. It is bluer than Mallard Wing although not as tall. 36".

SAUCY MINX (Caroline Dormon 1951) \$2.00
Impudent, upstanding, ruffled 5½" flowers. In color, a bright rose-red at edge of segments, shading inward to amber and soft yellow. Floriferous. 30". (Cajan x New Orleans) Honorable Mention 1951. Mary Swords DeBaillon Award 1954.

SAVANNARUM ROYALL \$1.00
A brilliant deep violet-blue flower of medium size and height. This plant will grow and bloom magnificently in full sun. 30".

THE KHAN (Dormon 1950) \$3.50
One of the loveliest of the Louisianas. The heavy, velvety textured petals of black-violet with a large signal patch of brilliant orange, set this iris apart as something exceptional and great. 34". (Haile Selassie x *Cardinalis*)

WOOD VIOLET (Ruth Dormon 1952) \$1.50
A clean dark blue self of a clarity and intensity not often seen. A Wood Violet, with just a touch of orange-gold for a signal patch. 5" flowers on 30" stems are an outstanding favorite. Honorable Mention 1951.

LOUISIANA COLLECTION
Make your own Louisiana collection.

Select 1 from \$2.00 Varieties 2 from \$1.50 Varieties	Select 2 from \$1.00 Varieties 1 from \$1.25 Varieties
6 Varieties (\$8.25 Value) for.....	
\$5.50	

Spuria Iris

The Spurias, sometimes called the "Butterfly Iris," are hardy and easy to grow. They range from three to five feet in height and will grow in almost any location of the garden. They are especially fine for background plantings.

Their blooming season starts about the middle of the Bearded Iris season, thus prolonging iris display in the garden. Too, they are one of the finest for flower arrangements and especially fine for corsages, resembling orchids.

Once planted, they establish themselves and do not need to be transplanted for several years. Like the other rhizomatous iris, they should be given shallow plantings, that is, just cover the rhizomes. Plant from 1½ to 2 feet apart.

For specimen blooms we suggest an application of steer fertilizer around your plants, in early spring, when new growth is starting up. A compost mulch is very fine too. Keep them well watered during their growing season, especially the pre-blooming growth.

SHIPMENTS will be made from September 1st to December. In the colder regions we will ship in March.

AZURE DAWN (Nies 1947) 75c

An attractive blue-lavender of smooth color and texture, with a lemon-chrome signal patch on the falls. 46".

BLACK POINT (Nies 1955) \$15.00

See introductions on page 4.

BLUE DISPLAY (Nies 1947) 75c

This is a medium blue with a yellow signal patch. A strong grower, heavy bloomer, and a fine garden accent. Late. 42".

BRONZSPUR (Nies 1947) 75c

A blending of brown and yellow, veined sepia. The garden effect is brownish-tan. Plant as a background for Russet Flame. 56".

CANARY ISLAND (M. R. Walker 1948) \$1.75

A delightful combination of broad canary-yellow falls, which are ruffled around the edges in white, and large somewhat flaring standards of white with canary-yellow at the base. Style arms show a beautiful white crest. 44". Highly Commended 1947.

CHEROKEE CHIEF (Nies 1951) \$3.00

A large flowered velvety deep brown with a rich yellow signal patch to add interest. Honorable Mention 1951.

COLOR GUARD (Nies 1951) \$3.75

A clear deep blue of exceptional substance, with broad flaring petals. Honorable Mention 1951.

DUTCH DEFIANCE (Nies 1943) \$1.50

A very good hardy blue with a yellow signal patch on the slightly frilled falls. One of the largest in size. Award of Merit 1949. 48". Late bloomer.

GOLDEN NUGGET (Dean 1931) 75c

Deep, rich yellow flowers on a free flowering plant. 48".

LARKSONG (Nies 1946) \$3.50

This is the most beautiful ruffled Spuria of them all. Soft creamy-white standards and styles. Rich yellow horizontal flaring falls with frilled and ruffled edges of creamy white. 48". Honorable Mention 1946. Stock limited.

MICHIGAN STATE (Nies 1943) 75c

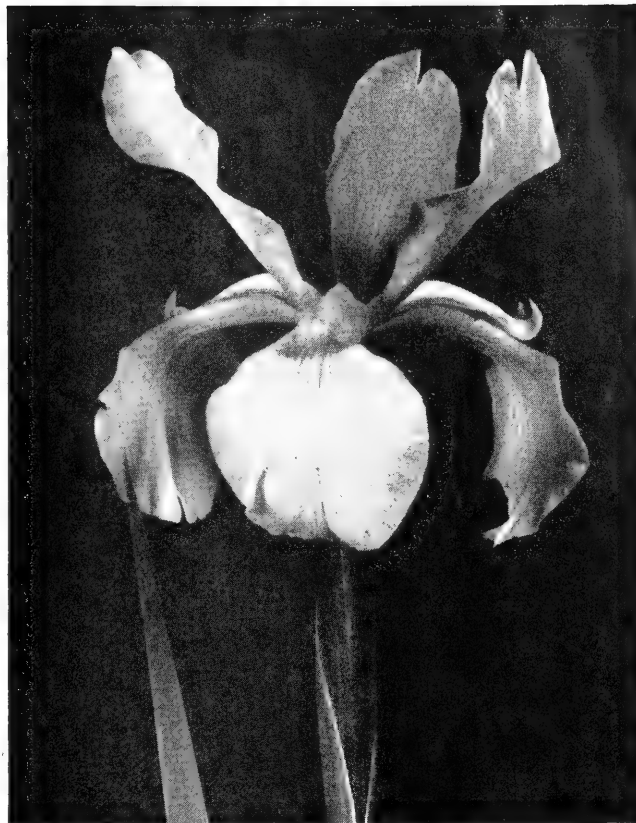
Large bronze flower of good form. The entire flower is veined in a deeper tone of brownish bronze. 40".

PASTORAL (Nies 1943) \$1.00

Here yellow and lavender are combined into a flower which adds novelty to the Spurias. The fall petals are a deep yellow edged with lavender and the standards are yellow, changing to lavender. The style arms are light lavender and the crests are deep lavender. 34".

RUSSET FLAME (Nies 1941) \$1.00

A distinctive glowing rich russet coloring with an undercolor of deep yellow. The falls are bordered dark brown. Honorable Mention 1950. 40".



WADI ZEM ZEM

SAUGATUCK (Nies 1941) 75c

A medium lavender-blue flower. The standards are blue with a yellow base. Falls are lavender-blue with a blended yellow center.

SUNNY DAY (Sass 1932) 75c

A good clear yellow with pleasing form. Honorable Mention 1936. 40".

TWO OPALS (Nies 1946) \$1.50

Pleasingly ruffled in form, the standards are soft cream, falls are the same, washed with lavender. Two Opals has that odd and rare gift of acquiring the tones of whatever background it is placed against, which makes it valuable for "My Lady's Corsage." 46". Award of Merit 1950.

WADI ZEM ZEM (Milliken 1943) \$2.00

An extremely large flower of clear deep creamy-yellow, with flaring falls two inches or better in width. An outstanding Spuria of excellent form, finish and substance. 48". Honorable Mention 1952.

WHITE HERON (Milliken 1948) \$2.25

Flowers are a large creamy white with a pale yellow flush in the center of the fall petals. Honorable Mention 1950.

YELLOW SWALLOWTAIL (Nies 1943) \$1.75

Light yellow standards and rich deep velvety yellow falls of very smooth finish, extra heavy substance. Not a fast increaser. 36".

ZEPHROSO (Nies 1953) \$8.00

Large, heavy textured flowers with beautiful ruffling. In color, a light honey with a rosy overlay.

SPURIA COLLECTION

CANARY ISLAND	or	YELLOW SWALLOWTAIL
TWO OPALS	or	DUTCH DEFIANCE
PASTORAL	and	WADI ZEM ZEM

PLUS ANY 2 ABOVE LISTED 75c ITEMS

6 Varieties
(Value \$7.75) for..... **\$5.25**

HEMEROCALLIS (Daylilies)

The Hemerocallis, or daylily, is the one perennial plant that comes close to being all things to all gardeners. They can be grown without fuss or bother, fitting into various conditions of soil, moisture and full sun or partial shade.

These pest-free plants will be a permanent addition to your garden. They need not be divided and transplanted for several years.

They are in full bloom in the middle of the hot summer when flowers are not too plentiful, and many varieties continue through with reblooming periods, clear up until heavy frosts.

SHIPMENTS can be made from August to December, and February to March 15th.

AFTERGLOW (Stout 1941) \$1.50

A waxy textured buff, artistically blended pink which is accented in the throat and midrib of the flower. July. Evergreen. 36".

ATHLONE (Russell) \$1.50

Delicately tinted in fascinating tones of cinnamon-pink. The wide throat is pale yellow. Flowers are of good size and pleasing form. This one is highly rated. 36". Evergreen.

AUGUST CHARM (Bach 1953) \$3.00

A blending of salmon-pink and orange sherbet, with a small green throat. 42".

BESS FOREMAN (Bach 1954) \$5.00

Pink daylilies are fast becoming a reality. Here we have one with medium pink petals and cream sepals. The flower is of medium size; floriferous, and a good grower. A twice bloomer. Semi-deciduous. 38".

CANARI (Nesmith 1940) \$1.50

These large open flowers are of palest canary yellow with a satiny finish. An evening bloomer. Plant them in light shade. Evergreen. 36".

CHIANTE (Nesmith) \$1.50

This raspberry-rose self is a delightful variation. 36". Deciduous.

COLONIAL DAME (Milliken 1948) \$2.00 Net

Large 6" flower, with broad ruffled and creped petals. It is light apricot, banded with a pale rose-tan, and a bright gold throat. Excellent substance and long blooming period. Semi-deciduous. 36".

CRADLE SONG (Milliken) \$7.50 Net

In this we find a three-time bloomer that opens in the afternoon and lasts into the next day. It is a progeny of the famous High Noon, but is a good increaser. It seems that no fault can be found with this little fellow, as its blooms are large, even though its stalks are about 22 inches in height. What a grand show this beauty, with its lovely deep yellow flowers, will be, when planted in the front of your flower beds. Evergreen.

CRYSTAL PINK (Nesmith 1938) \$1.00

A salmon pink with a deeper rose halo. There is a frosty sheen over the entire flower. The sepals are recurved. A hardy grower. Tall and well branched. 42". Semi-deciduous. July-August.

DAUNTLESS (Stout 1935) 75c

Pale yellow with a greenish throat. Long blooming season. Open evenings and a recurrent bloomer. Semi-deciduous. 36".

DAWN PLAY (Nesmith 1938) \$1.00

This deep velvety rose, flushed gold in the heart of the flower, blooms early in the season and is recurrent. 48". Deciduous.

DR. STOUT (Traub 1938) 75c

A rich deep orange, overlaid bright cinnamon. July-August. 36". Evergreen.

FLORE PLENO (Species) 75c

This is a very double, or triple petaled daylily. The color is a vivid reddish-orange. Large symmetrically formed flowers. It is a fast increaser and deciduous. 48".

FOND CARESS (Milliken) \$2.50 Net

Daylilies that will remain open all evening are not too plentiful, therefore, they are "must haves." Fond Caress is one of them. Its lovely shimmering star dusted petals are creamy yellow, lily-shaped, with broad petals and sepals which overlap. A most fragrant flower. Evergreen. 36".

GARDEN LADY (Norton) \$1.50

This is a very pretty and satisfactory pink blend, we are sure you will like. Evergreen. 36".

GARNET ROBE (Milliken) \$2.50

A true garnet-red of heavy velvet texture, with a deep yellow-green throat. The rich, glowing, smooth coloring of this flower has won it top rating in this color class. A vigorous grower and early blooming. Evergreen. 36". Pictured on back cover.

GRANADA (Traub) 75c

A red-bronze, with a golden throat which gives it life. The petals are nice and wide. A twice bloomer and evergreen. 36".

HONEY REDHEAD (Nesmith 1942) \$1.00

A rare combination of colors, bright rose-red with a well defined border of pale yellow. 38". June-July. Deciduous.

JEAN (McDade) \$1.25

A gay and exciting brick red and yellow bicolor. The sepals have a prominent yellow midrib through the center. Its edges are curly and fluted. Spectacular in the garden. Late. 48".

JEAN LAFITTE (Claar) \$3.00

A deep garnet of velvety texture, with a throat of cool chartreuse green. Wide petals and sepals. Early mid-season. 36".

JEWEL RUSSELL (Russell) \$3.00 Net

Large blooms of pale lemon yellow with ruffled edges. Petals are wide and recurved. A knockout. Evergreen. 36".

JOY RUSSELL (Russell 1942) \$1.00

A tall, light yellow, paler than lemon yellow. Full, open flowers. A good garden subject. Evergreen. 36".

KANAPAHA (Watkins) \$1.50

Here is another jewel for your garden, in a clear bright raspberry-red without midrib or eye-zone. Even the throat of the flower is the same. Evergreen. 36".

LAMPASAS \$1.00

An attractive blending of apricot and buff tones. The flowers are large and have a graceful wide open flare. 36". Deciduous.

LUSTROUS (Nesmith 1942) \$1.00

A large, bright pink overflushed with a lustrous sheen. Orange throat. Many flowered, well-branched stalks. Deciduous. 40".

MADCAP (Nesmith) \$1.00

An outstanding bright burnt orange which will be a distinctive addition to your daylily collection. Very floriferous. Evergreen.

MADRIGAL (Milliken) \$8.50

Take the substance of Ruffled Pinafore, the crepe texture and width of petals of Colonial Dame and blend the colors of both parents, to obtain a warm apricot with a rosy dusting. The petals have a delightful reflex, which sets this daylily apart from the ordinary. Early mid-season. A rebloomer. 36". (Colonial Dame x Ruffled Pinafore)

MAID MARION (Lester) \$5.00

Large graceful flowers of coral pink with ruffled segments. Grows tall in the north and fairly low in the south. Good increaser. Deciduous.

MAJESTIC (Stout) \$1.50

One of the finest of the large deep orange daylies. 36".

MARIE WOOD (Wood) \$25.00 Net

Really a pink daylily—very near Azalea pink. Round, full flowers evenly toned and of firm smooth texture, with recurving petals. The same pink coloring follows deep into the throat of the flower, which has a dewy freshness about it the entire day. Best growing results are found with this one, when planted and left undisturbed for several years. It does not seem to like being transplanted every year. Early mid-season. Deciduous. 30". Stock very limited.

MARY GUENTHER (Russell) 75c

A brilliant color contrasting bi-color of carmine-red and clear yellow. July. Recurrent bloomer. Evergreen. 36".

LYONS IRISLAND OFFERS MANY SPECIES OF IRIS

Amount Enclosed

\$ _____

Send full amount with order.
We do not ship C. O. D.



Please do not write in this space

Name	Date
Street	
City	Zone State

ORDER EARLY
All retail orders are shipped postpaid. We guarantee safe delivery of all plants.

Quan.		Total	Quan.	Total	Quan.	Total		
	Al Borak	9.00		Enchantress	15.00		Lina Beth	20.00
	Arab Chief	.75		Envoy	3.00		Louvois	.60
	Argus Pheasant	2.50		Extravaganza	1.00		Lura	7.50
	Azure Skies	.60		Fantasy	3.50		Lynn Langford	1.50
	Ballerina	5.00		Firecracker	1.00		Malay	5.00
	Bandmaster	.75		Firedance	2.00		Mary Randall	15.00
	Black Diamond	4.00		First Violet	20.00		Master Charles	.75
	Black Hills	7.50		Forward	1.00		Melody Lane	3.50
	Bluebird Blue	10.00		Frances Kent	7.50		Ming Yellow	.75
	Blue Blazes	3.00		Fuchsia	5.00		Minnie Colquitt	1.00
	Blue Parakeet	3.00		Gala Finale	3.50		Miss California	.60
	Blue Rhythm	1.00		Golden Crown	20.00		Moonlight Madonna	.75
	Blue Shimmer	.75		Goldendale	7.50		Mrs. D. Pattison	2.50
	Blue Valley	1.00		Golden Fleece	.75		Mystic Melody	5.00
	Broadripple	7.50		Golden Plover	5.00		New Hope	3.00
	Bryce Canyon	1.00		Golden Russet	2.00		New Snow	1.50
	Burgundy Splash	5.00		Golden Sunshine	7.50		Night Storm	8.00
	Butterfly Blue	10.00		Gold Smoke	5.00		Northwestern	10.00
	Cairo	6.00		Great Lakes	.75		Ola Kala	1.00
	Carol Harker	3.50		Gypsy Classic	5.00		Pacemaker	3.00
	Caroline Jane	9.00		Hallmark	20.00		Painted Desert	.75
	Casa Morena	1.00		Happy Birthday	8.00		Palomino	12.00
	Cascade Splendor	1.50		Harlequin	2.00		Patrice	1.00
	Chantilly	1.00		Heigho	3.00		Pierre Menard	2.50
	Cherie	3.50		Helen Collingwood	7.50		Pikes Peak Pink	1.00
	China Maid	.75		Helen McGregor	1.50		Pink Cameo	1.00
	Chivalry	1.00		Heritage	3.50		Pink Formal	4.00
	Clear Sailing	3.50		Heroique	2.50		Pink Sensation	5.00
	Cliffs of Dover	10.00		Hi Time	3.00		Pinnacle	2.50
	Cloth of Gold	.75		Honor Bright	3.50		Prairie Sunset	1.00
	Cloudcap	6.00		Illustrious	5.00		Prospector	2.50
	Color Carnival	2.50		Inca Chief	10.00		Purple Band	1.50
	Colonel Primrose	5.00		Indian Hills	.60		Rainbow Room	2.00
	Constant Comment	12.00		Jake	.60		Ranger	1.00
	Copper Medallion	4.00		Jane Phillips	3.00		Raspberry Ribbon	10.00
	Courtier	1.00		Joseph's Mantle	2.50		Rehobeth	25.00
	Dawn Reflection	3.00		June Bride	7.50		Rocket	1.00
	Dazzelier	3.50		Katherine Fay	.75		Royal Sovereign	4.00
	Desert Song	1.00		King's Jester	1.50		Sable	.75
	Distance	1.00		Lady Boscawen	1.00		Sable Night	15.00
	Dolly Varden	7.50		Lady Mohr	1.00		Samite	5.00
	Ebony Isle	2.50		Lake Shannon	1.00		Sharkskin	.75
	Elmohr	1.00		Limelight	7.50		Sir Knight	.60
	Column 1			Column 2			Column 3	

Quan.		Total	Quan.		Total	Quan.		Total
	Sky Above	5.00		Thotmes III	7.50		Negus	.40
	Sky Ranger	1.00		Three Oaks	1.00		Dwarf Coll. (5)	1.50
	Snow Flurry	1.00		Tiffanja	.60		Dwarf Coll. (15)	4.00
	Solid Gold	10.00		Toast an' Honey	20.00		Dwarf Coll. (50)	12.00
	Solid Mahogany	1.00		Top Flight	7.50		Blue Ribbon Coll.	5.00
	Spanish Fandango	5.00		Tranquility	5.00		Get Acquainted Coll.	3.95
	Spanish Peaks	2.00		Treasure Island	.60		Cherie Coll.	7.00
	Spotlight	7.50		Truly Yours	10.00		Connoisseur's Coll.	30.00
	Spring Sonnet	15.00		Vatican Purple	1.00		Masterpiece Coll.	5.00
	Sunray	2.00		Wabash	.30		Total Column 1	
	Sylvia Murray	1.00		White Tower	3.00		Total Column 2	
	Tabu	15.00		Winter Carnival	.75		Total Column 3	
	Tally Ho	5.00		Dwarf Iris			Total Column 4	
	Tea Rose	.75		Bride	.40		Total Column 5	
	Technicolor	5.00		Dixmude	.40			
	Temple Bells	10.00		Fairy	.40			
	Theodalinda	.75		Florida	.40			
	Column 4			Column 5				

Blue Ribbon Collection

Select 9 for \$5.00. Double the number from each group for \$10.00

Select 4 from this group.

Blue Rhythm
Blue Valley
Bryce Canyon
Casa Morena
Chantilly
Firecracker

Lady Boscawen
Lady Mohr
Lake Shannon
Minnie Colquitt
Ola Kala
Pikes Peak Pink

Prairie Sunset
Ranger
Rocket
Sylvia Murray
Three Oaks
Vatican Purple

Select 4 from this group.

Bandmaster
Blue Shimmer
China Maid
Cloth of Gold

Great Lakes
Katherine Fay
Master Charles
Sable

Sharkskin
Tea Rose
Theodalinda

Select 1 from this group.

Azure Skies
Indian Hills

Jake
Miss California

Tiffanja
Wabash

CONNOISSEUR'S Collection

Select 6 for \$30.00.

Select 2 from each group.

Group 1
Burgundy Splash
Cloudcap
Malay
Mystic Melody
Samite
Technicolor
Tranquility

Group 2
Broadripple
Dolly Varden
Frances Kent
Golden Sunshine
Lura
Raspberry Ribbon
Thotmes III

Group 3
Caroline Jane
Inca Chief
Solid Gold
Temple Bells
Truly Yours

Masterpiece Collection

Select 3 for \$5.00. Double the number from each group for \$10.00.

Select 1 from each group.

Group 1
Argus Pheasant
Joseph's Mantle
Pierre Menard
Pinnacle
Prospector

Group 2
Blue Parakeet
Dawn Reflection
Hi Time
Pacemaker
White Tower

Group 3
Firedance
Golden Russet
Rainbow Room
Spanish Peaks

CHERIE COLLECTION

\$7.00 (A \$10.50 value.)

This is one of the most popular collections we have ever offered. Three of Mr. David Hall's masterpieces now available to you at this new low price.

Cherie
Fantasy
Melody Lane

Get Acquainted Collection

Six outstanding Iris for only \$3.95. Starred varieties selected by the Association of Iris Growers as the "Iris of the Year" for 1955.

*Blue Rhythm
*Blue Shimmer
Minnie Colquitt

*New Snow
Ola Kala
Sable

RETURN TO:

Library,
Department of Agriculture
Rm 1052 South Building
Washington 25, D. C.

PAGE -----

REFERENCE BEGINS ON

Please reverse slip in
returning the publication.

This publication is charged
to the above. Any transfer
should be reported promptly
to the Library, Br. 3434.

DUE

June 15-

TO:

Mr. Patterson

FS

RETURN TO:

ATTENTION:

Department of Agriculture
Palmer South Building
Washington 25, D. C.

NOV 1954

RECEIVED

RECEIVED
NOV 19 1954

RECEIVED
NOV 19 1954

10

DEPT

- MATADOR** (Nesmith 1940) **75c**
A full cup-shaped flower with 20 or more buds on nicely branched scape. A bright, rich mahogany, almost crimson, with deep red velvet flush on the wide petals. 38". July-August.
- MEADOW GOLD** (Hall) **\$1.50 Net**
Large flowers, medium deep gold, with broad sepals of heavy texture. Mid-season. 36".
- MICHAEL ROBINSON** (Russell 1946) **\$1.00**
A heavy bloomer in rich glowing tones of brightest red blending to medium dark red color. 40". A garden gem. Evergreen.
- MIDWEST STAR** (Sass) **\$4.00**
A very fine large pale yellow. Wide slightly ruffled petals of good substance. Evergreen. Mid-season. 48".
- MILADY** (Nesmith) **\$2.00**
A lily-formed, deep salmon-pink self. 40".
- MISSION BELLS** (Hall) **\$2.50**
A profuse bloomer of clear medium yellow. Wide, ruffled petals. Well formed flowers. Mid-season. 36".
- MITRA** (U.S.D.A.) **\$3.00**
Exceptionally heavy substance and smoothly finished flowers. Broad petals of deepest majolica-yellow ground color with a faint over-flush of garnet-brown and a stripe through the center are frilled around the edges. The sepals are deep Indian yellow. The throat is majolica yellow. An impressive daylily of quality. 36".
- MONGOL** (Norton) **\$2.00**
One of the largest. Clear lemon-yellow, wide ruffled petals and long narrow sepals. Well branched stems. Long bloomer. Mid-season. 36".
- MRS. B. F. BONNER** (Russell 1942) **\$1.00**
This is a popular and dependable light lemon yellow. Its petals are broad and of heavy texture. The large 6" blooms will stay open into the late evening. It blooms profusely. Evergreen. Recurrent. 36".
- MYKAWA** (Russell) **75c**
A medium size and height flower of a dark fiery red, with a satin sheen, that does not fade in the sun. 34". Deciduous.
- MYRANDE** (Bach 1953) **\$6.00**
A deep maroon with a darker center. Flowers are quite large and both petals and sepals are narrow, giving the spider type effect. 40".
- NARANJA** (Wheeler 1947) **\$3.50**
Highly rated large 7" pure golden orange, with well shaped ruffled irregularly recurved broad petals. Ranks high in popularity poll. Very fine in every way. Evergreen. Mid-late. 38".
- NORTH STAR** (Hall) **\$3.00 Net**
Large, very light creamy yellow of excellent substance and graceful form. This is the nearest to white in the daylilies to date. Late. 36".
- ORANGE BEAUTY** (Sass 1945) **\$3.50 Net**
Among the very best of the broad-petaled clear golden orange selfs, with wonderful substance and excellent form. The 5½" flowers are very fragrant. Produces a profusion of blooms, and is a good grower. Rates high; deciduous. Mid-late. 40".
- PAINTED LADY** (Russell) **\$2.00 Net**
One of the most famous, highest rated daylilies. Gigantic flowers with wide ruffled sepals and petals, coppery cinnamon over yellow, with a coral throat. Evergreen. 36".
- PERSIAN PRINCESS** (Nesmith 1932) **\$1.00**
Deep velvety red petals with a heavy overflush of purple, the sepals are a shade lighter, but with the same depth of color. 40". July-August. Deciduous.
- PINK CHARM** (Nesmith 1940) **\$1.00**
Beautiful large flowers with starlike petals and sepals in recurving form. Firm substanced. Coppery rose-pink in color, with a light cadmium-yellow throat. Semi-deciduous. Mid-late. 48".
- PINK SATIN** (Bach 1953) **\$5.00**
A lavender-pink with a creamy throat. Midseason. 40".
- PINK RADIANCE** (Douglas 1949) **\$8.00 Net**
A light, medium pink with a halo of a deeper tone of the same color just above the yellow throat. Blooms are both broad and full, with petals and sepals slightly fluted at the tips. Tall, well-branched, and with good sun-resistance.
- PINK SUNRISE** (Bach 1954) **\$3.50**
Daintiness and charm are expressed in this lovely pink and white combination. Wide open flowers of pleasing size. Early. 36".
- POTENTATE** (Nesmith 1943) **\$4.00**
A very outstanding flower of pansy red-purple. Broad full petals and sepals; even the stamens and pistil are of the same color. A most prolific bloomer from early 'til late. 42". Deciduous.
- QUEEN ESTHER** (H. Sass 1949) **\$2.00**
A brilliant crimson self with a small deep yellow throat. It does not fade in the sun. Very good branching and the 5" flower stays open evenings. 36".
- RED CINDERELLA** (Russell) **\$1.00**
A brilliant Chinese-red with a satiny sheen and an orange throat. This is just about the brightest of the reds. Very showy. Deciduous. 32".
- ROSALIND** (Stout-selected) **\$1.50**
This is one of the nearest to pink daylilies. It is a rosy-pink and makes a lovely display in the garden. Open flaring, recurving, petals of the bloom are borne on graceful stalks. This is a variant of the Fulva rosea, collected in China, and selected by Dr. Stout. A good grower. Deciduous. 36".
- ROYAL RUBY** (Nesmith 1942) **\$2.00**
A smoothly finished crimson red flower with full semi-flexed petals and sepals. A self with almost no yellow in the cup. 38". July-August. Deciduous.
- ROYALTY** (Nesmith 1940) **\$1.00**
Large open flowers of true maroon with a velvety suggestion of blue-purple sheen. Wide petals and sepals. Contrasting, is the star-shaped cup of rich yellow. 40". July-August. Deciduous.
- RUBY SUPREME** (Wheeler 1940) **\$1.00**
Luminous ruby-red with a slight salmon cast. The delicate gold line is traced through the center of the petals. The heart of the flower is green-gold. A good performer. Evergreen. Midseason. 36".
- RUFFLED PINAFORE** (Milliken) **\$8.50 Net**
Everybody's favorite yellow. The ruffled, creped and crinkled, wide, overlapping petals and sepals are a soft apricot-yellow with a char- treuse tint in the throat. Evergreen. 34".
- SCARLET SUNSET** (Wheeler) **\$2.00**
Very bright flaming scarlet self. Medium size, star-shaped, recurving flowers. A rebloomer. Mid-late. 32".
- SU-LIN** (Nesmith 1941) **\$1.50**
A light bicolor of mauve and creamy yellow. The flowers are open and flaring. Recurrent blooming. 36". July-August. Deciduous.
- SUNNY WEST** (H. P. Sass 1933) **75c**
A prolific flowering variety. The large flowers are of pale canary yellow, with a waxy finish. 48". July-August. Deciduous.

Super Hemerocallis Collection

on Orders of
\$5.00 or More Take **25%** DISCOUNT

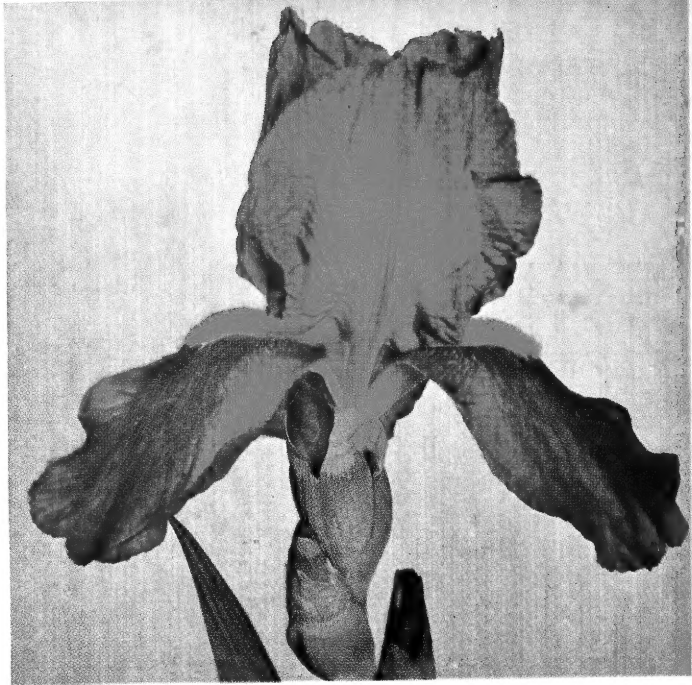
on Orders of
\$10.00 or More Take **33 $\frac{1}{3}$ %** DISCOUNT

Items marked NET are not included in this offer.

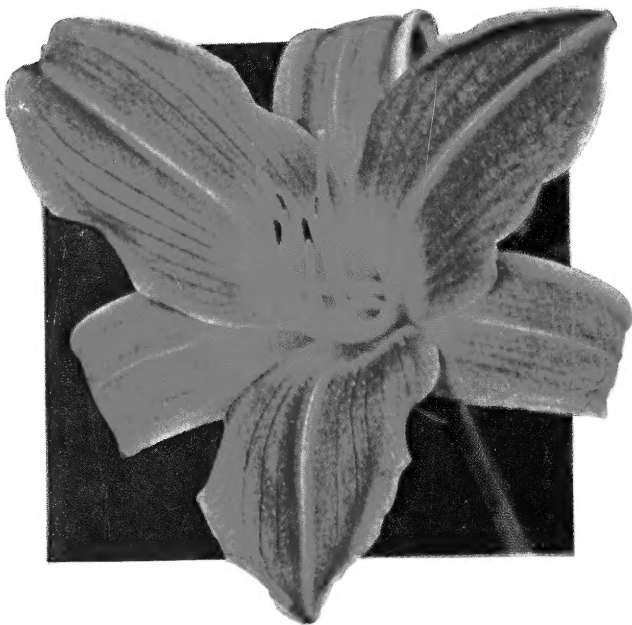
DON'T BE CONTENT WITH BEARDED IRIS ALONE!



CHAR-MAIZE



LADY ALBRIGHT



GARNET ROBE



COLONIAL DAME

Lyon

IRIS GARDENS
7041 Woodman Ave.
Van Nuys, California

Telephone: STate 5-6014

Library, U. S. Dept. of Agriculture,
WASHINGTON 25, D. C.

BULK MAIL
U. S. Postage
PAID
VAN NUYS, CALIF.
Permit No. 29

POSTMASTER: Form 3547 requested.